

# Virtual Seminar on Reinsurance Finding Waldo: Geospatial Solutions to CAT Risk

June 8<sup>th</sup>, 2021

---

**Dave Jowell**  
**CEO – GIA Map**



# My Past “Waldos”

Unexpected and unmodeled examples, what can we learn from our past?

- September 11<sup>th</sup>, 2001
- San Bruno, CA - Gas Pipeline Explosion (2010)
- AZ - Haboob (2011)
- Dawn of the Mega Fires
- 2020, need we say more?

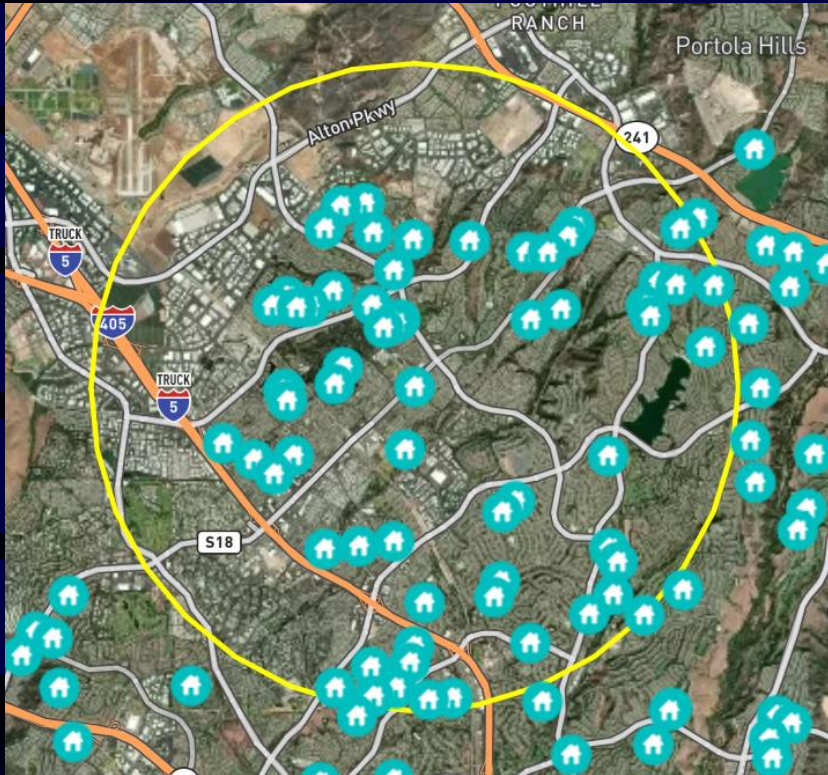
# Insurance Industry Today

- Do we know and do we defend our spread of risk?
- Reactive Cycle – cancellations vs. capacity
- The Chainsaw vs. Scalpel
- Silo - one size fits all approach
- Predicting the Unpredictable - Hazard Models

# Geospatial Intelligence

- Spatial awareness provides critical insights, previously hidden analytics that drive smarter decision-making
- Each Company has a unique book of business & philosophy
- Holistic Approach vs Reactive Cycle
- Define – Defend – Weaponize – Saturation
- Geospatial tools are agile & interactive - living breathing Map
- Real, current event management and resource deployment

# Integrating The Book of Business



Saturation  
 Radius  Freehand

Search Radius  
3 miles

62 risks within given area.  
Total coverage for given area:  
\$42,700,000.00

[Download Search Results](#)

API and Visual Reviews

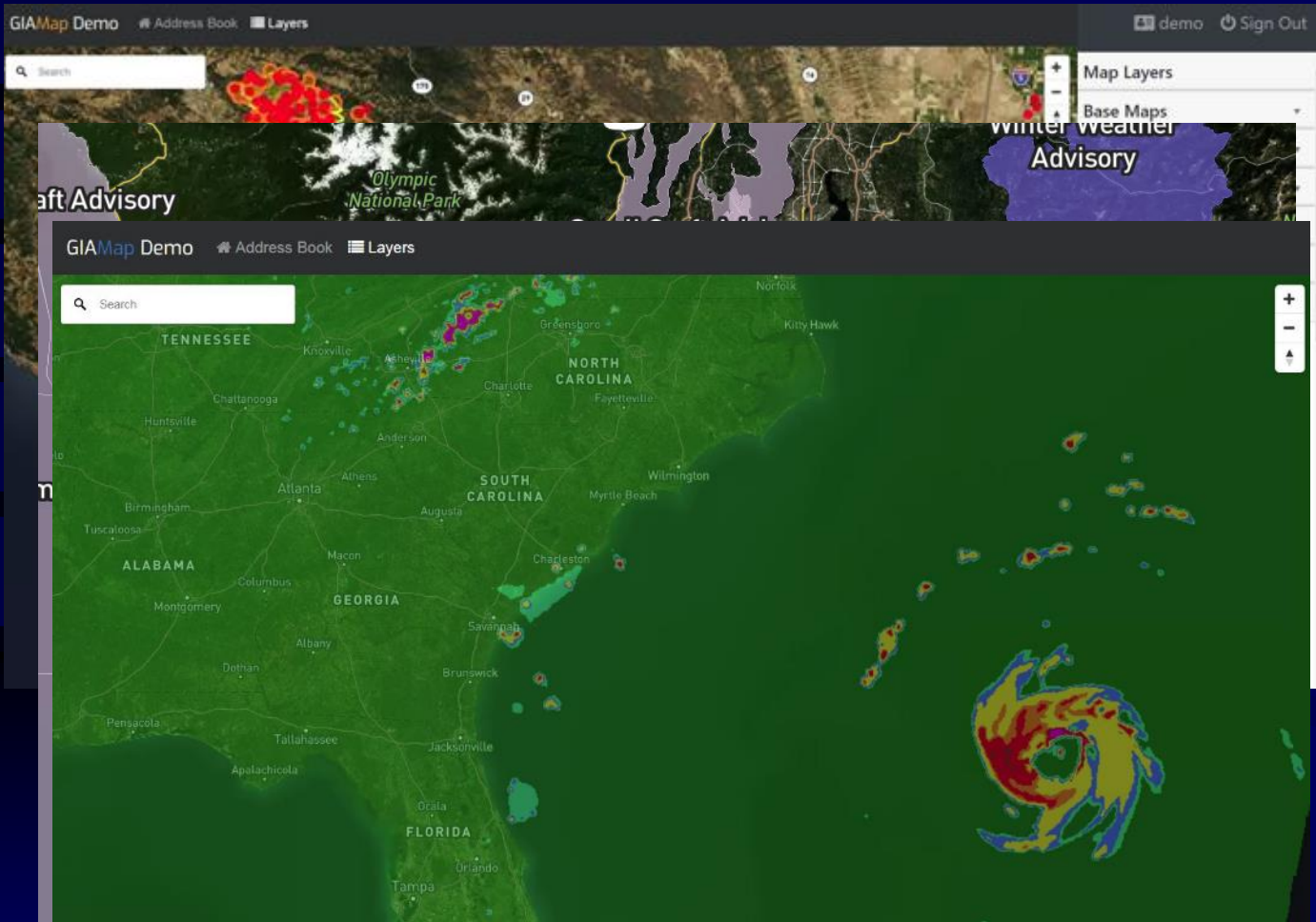
New Business  
Re-underwrites  
Live CAT Events

Best Practice - Nightly API book update

## Saturation = consistent, reliable CAT risk management



# The Active Map



Live and near real time data

Fire

Weather Warnings

Weather radar

Much More:

Earthquake

Hail

Flood

Tornado

Ad Hoc Critical Events

# Case Study: Small Company with no API resources

London syndicate needed to automate its Hazard UW, Saturation and Minimum Pricing

Utilized GIA Map platform and wildfire model, integrated with their threat zones and pricing

Then Combined Real Time Search for Active Hazard Events

Solution Returns Eligibility 24/7 - TIV/PIF Aggregate \$ and Minimum Pricing



**Results: Decline, Refer or Eligible with Minimum Price Based on Custom Settings**

# Case Study - Small Company Result

GIAMap - Demo

Coverage A / TIV

\$ 400,000

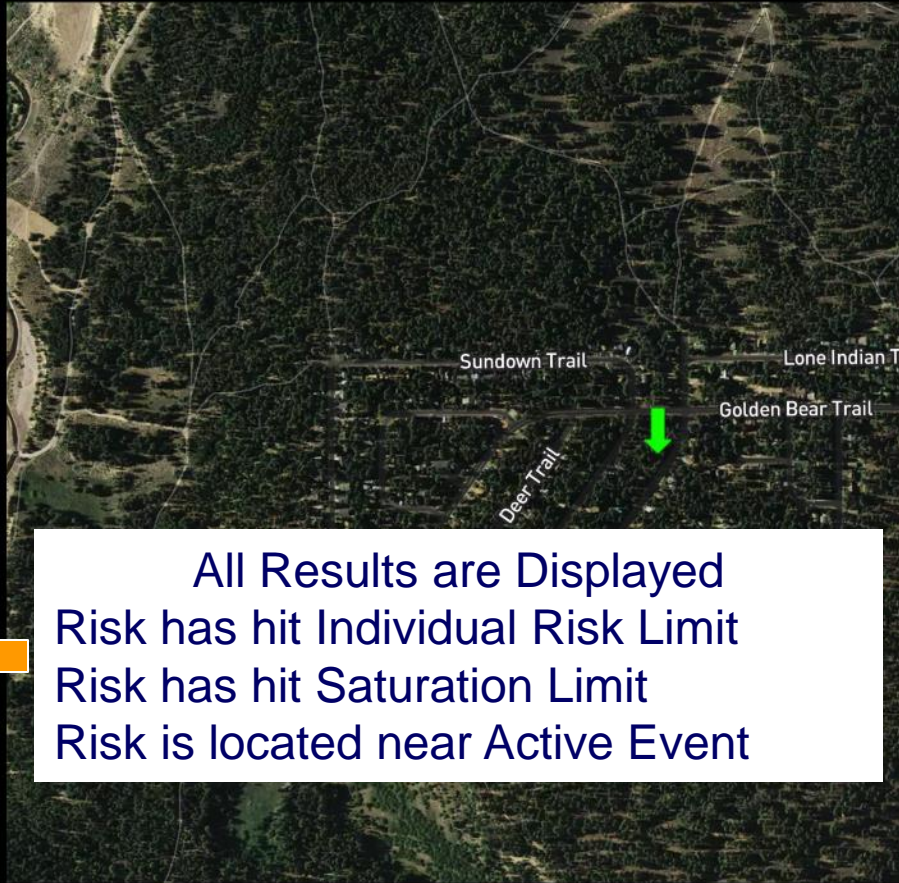
Submit Clear

**✘** Result: Does Not Qualify

Address:  
3083 Jacarillo Trl, South Lake Tahoe, CA 96150

This location is ineligible for automatic placement due to:

- Risk coverage amount exceeds company per-risk limit for this area.
- Risk coverage amount exceeds company concentration limits for this area.
- Increased potential for loss due to severe weather (Red Flag Warning)



All Results are Displayed  
Risk has hit Individual Risk Limit  
Risk has hit Saturation Limit  
Risk is located near Active Event



# NEWS FLASH: Waldo is Here!

The Urgency of the event is now, what do we need?

- Claim assets deployment – based on real time Geospatial data
- Proactive communication with policy holders
- Geo tools adjust with the event (event fog)
- Measure dollars at risk continuously
- Enable precise communication with partners and across divisions
- All departments and partners work from the same roadmap, everyone knows their role and is ready to act!



# Waldo Alert - Passive vs Active


  
**GIAMapZipAlert - Potentially Impacted Zip Codes**

---

Nashville Tornado path

- 37015 -- Ashland City, TN
- 37076 -- Hermitage, TN
- 37115 -- Madison, TN
- 37122 -- Mount Juliet, TN
- 37138 -- Old Hickory, TN
- 37189 -- Whites Creek, TN
- 37201 -- Nashville, TN
- 37203 -- Nashville, TN
- 37204 -- Nashville, TN
- 37205 -- Nashville, TN

## Automated Email Alerts Zip Codes & Policies Potentially Impacted

  
**GIAMapCATAAlert - Potentially Impacted**

---

SP Book 10.2019

- Weather Warnings
  - Flash Flood Warning: 8
  - Severe Thunderstorm Warning: 211

---

[Log In to GIA Map](#)

Policy Details List Downloadable for  
Distribution



Understanding your CAT event tolerance and defending your spread of risk at every level is paramount to preparation against the unknown.

*Thank you!*