



**The Actuarial Profession**  
making financial sense of the future

# 2001 JOINT GIRO/CAS CONVENTION



3 - 6 October 2001  
GLASGOW  
SCOTLAND

**FINAL PROGRAMME**

Faculty of Actuaries

Institute of Actuaries



# 2001 JOINT GIRO/CAS CONVENTION



## **ORGANISING COMMITTEE**

Richard Winter (Chairman)

Andrew Hitchcox  
Dimitris Papachristou  
Peter England  
Kendra Felisky Watson  
Barbara Beebee  
John Narvell - CAS Representative

## **CAS COMMITTEE ON SPECIAL INTEREST SEMINARS**

Alan M. Hines - Chairman  
Abbe Bensimon - VP Continuing Education  
Sarah Krutov  
Robert S. Bennett  
Edward P. Lotkowski  
Cara M. Blank  
Karen Alice Pachyn  
Lori M. Bradley  
Richard A. Smith  
Elliot Burn  
Elizabeth Stadler  
Kenneth E. Carlton  
Simon Kai-Yip Wong  
Kin Lun (Victor) Choi  
Emily Monacell - CAS Meeting Planner  
Kathleen Dean - CAS Meeting Planner

## **FACULTY & INSTITUTE OF ACTUARIES CONVENTION STAFF**

Cath Bryson  
Tracey Hannaford Hill  
Katie O'Doherty  
Linda Pritchard

## **PETER RAND LOGISTICS STAFF**

Liz Ayto  
Jacqueline Butler  
Hayley Jones  
Ann Manning

# CONVENTION INFORMATION

## **SPECIAL NOTE FROM CHAIRMAN; RICHARD WINTER**

The tragic events of Tuesday 11 September have impacted the Final Programme for the Joint GIRO/CAS Seminar. The Final Programme contained within this booklet is still at the time of printing PROVISIONAL and may be subject to change throughout the Convention. Please listen out for announcements at sessions and keep a close eye on the NOTICE BOARD located by the Convention Registration Desk for changes to the Programme.

## **CONVENTION HOTEL**

The Glasgow Moat House Hotel  
Congress Road  
Glasgow  
Tel: 0141 306 9988  
Fax: 0141 227 8195

## **PLENARY SESSIONS**

Will be held in **The LOMOND AUDITORIUM**

at the

### **SCOTTISH EXHIBITION & CONFERENCE CENTRE (SECC)**

The SECC is adjacent to the Glasgow Moat House Hotel - participants are advised that they may gain access to the SECC either via the special walk-through from the Moat House (accessed from the Mezzanine Level at the Moat House), or via the Argyll Suite Foyer exit.

## **CONVENTION OFFICE** (office hours only)

Tel: 0141 306 9988 (please ask to be connected to the GIRO/CAS Convention Desk)  
Fax: 0141 227 8195

## **OTHER HOTELS**

Glasgow Hilton Hotel, 1 William Street, Glasgow Tel: 0141 204 5555  
Post House Hotel, Bothwell Street, Glasgow Tel: 0870 400 9032

## **ATTENDANCE**

Approximately 400 participants will attend the Convention. A full list of those attending can be found at the back of this Programme.

## **CONTINUING PROFESSIONAL DEVELOPMENT**

Members of the Faculty and Institute may find the Convention a useful contribution to their Continuing Professional Development. The amount of hours recorded is left to the discretion of the individual. However a maximum of 14 hours may be counted for this Convention.

The CAS Special Interest Seminar sessions offer opportunities for casualty/general insurance actuaries to achieve continuing education requirements.

## **START OF THE CONVENTION**

The Convention will commence at 1400 in the Lomond Auditorium at the SECC on Wednesday 6 October 2001.

## **CONVENTION DESK**

Staff will be on duty at the Convention Desk (situated on the Mezzanine Foyer) at the following times:

Wednesday 3 October	11.00-17.45
Thursday 4 October	08.00-16.45
Friday 5 October	08.00-17.30

## **MEETINGS**

All the Plenary sessions will be held at the SECC in the LOMOND AUDITORIUM.

The Workshops will be held in the SECC and the Moat House.  
Plans of all meeting rooms are included in this Programme.

Participants are requested to sign up for their preferred workshops at Registration on Wednesday 3 October. As already advised, workshop selections were used for planning purposes only and we have incorporated those selections to put together the timetable for workshops.

Places at workshops are available on a first-come, first-served basis and there are a particular number of places available in each workshop. Inside your delegate pack is a Workshop Selection Sheet. Please hand this to the Workshop Selection Desk (adjacent to the Convention Desk), to choose and collect your workshop 'tickets'.

### EVENING ENTERTAINMENT

3 evenings of entertainment have been arranged incorporating drinks & dinner each night as follows:

Wednesday 3 October	Waxy O'Connors Glasgow Pub Drinks & Buffet Supper & Live Music	Casual Dress
Thursday 4 October	Edinburgh DineAround & Drinks Reception at Dynamic Earth	Casual/Smart Dress
Friday 5 October	Gala Dinner & Scottish Evening & Civic Reception Kelvingrove Art Gallery & Museum	Smart Dress

### EDINBURGH DINEAROUND

All restaurants for the Edinburgh Dinearound have been selected for their excellence, diverse menus and quality.

Participants (and accompanying persons - where applicable) will be allocated their 'dinearound' ticket at Convention Registration. There is no pre-allocation of dinearound 'tickets'. After receiving your Convention Pack, please proceed to the Dinearound Desk and collect your 'ticket' giving details of your restaurant. **N.B. Participants with accompanying persons who have booked and paid to take part in the Edinburgh Dinearound should request a 'double-ticket' to ensure that you and your partner go to the same Restaurant!! Participants with 'Special Diets' (other than vegetarian) should request a 'Special Diet Ticket'.**

### SPECIAL DIETS

Participants (and accompanying persons) who requested special diets on their application forms have had their requirements conveyed to the hotel. Please make yourself known to the serving staff at meal times.

### EXPENSES

Participants are advised that they must settle their own expenses over and above what is included in the Convention fee:

Wednesday 3 October	Accommodation Tea/Coffee Lunch - including fruit juice Dinner - including wine and beer	Thursday 4 October	Breakfast Accommodation Tea/Coffee Lunch - including fruit juice Drinks Reception Dinner - including wine
Friday 5 October	Breakfast Accommodation Tea/Coffee Lunch - including fruit juice Civic Reception Dinner - including wine and Liqueur	Saturday 6 October	Breakfast

### EXHIBITION

This year a small Exhibition will run alongside the Convention in the Argyll/Castle Suite foyer.

6 companies will Exhibit at the Exhibition as follows:

- English Matthews & Brockman
- Ernst & Young
- KPMG
- PricewaterhouseCoopers
- Swiss Re
- Watson Wyatt

We have received the following details on the Exhibitions:

## **ENGLISH MATTHEWS BROCKMAN**

### ***Background to EMB***

Founded in 1997, English Matthews Brockman is a specialist non-life actuarial consultancy recognised internationally for the breadth and quality of its support for the world's reinsurance and insurance industries. Our aim is to develop long-term relationships with clients, helping them to find solutions to complex problems and to identify business opportunities.

### ***EMB Software***

#### *ResQ - Claims reserving*

ResQ provides powerful data handling and manipulation together with a wide range of modelling techniques including, Chain Ladder, Bornhuetter-Ferguson, Cape Cod and Stochastic methods.

#### *EMBLEM - Personal lines and small commercial pricing*

EMBLEM is the leading personal lines pricing tool in the UK, providing the power of advanced statistical techniques whilst remaining flexible and easy to use.

#### *RePro - reinsurance management information and analysis*

RePro allows inwards exposure and outwards reinsurance to be easily understood through powerful graphics. Possible uses of RePro are varied, ranging from analysis of bad debt to testing different loss scenarios, and from simple data cleansing to presenting information to management.

#### *PrisEMB - Large Commercial Pricing*

PrisEMB is a unique technical pricing tool, designed by experienced market practitioners. It creates an audit trail, keeping an electronic record of all quotes, and enabling accurate efficient reserving.

#### *IGLOO - Dynamic Financial Analysis Toolkit*

Igloo provides Dynamic Financial Analysis (DFA) capability. It is unique in that the DFA framework it provides enables models to be built at any level of detail.

## **ERNST & YOUNG**

### **DETAILS NOT AVAILABLE AT TIME OF GOING TO PRESS**

## **KPMG Profile**

KPMG's actuarial team are very pleased to have the opportunity to support the conference.

There are many significant issues facing the insurance and reinsurance market at present including: the rate of personal injury inflation; the cost of capital and the adequacy of rates; globalisation; dis-intermediation; the merging of the insurance and finance sectors and regulatory change. KPMG, with its multi-discipline approach and global reach, is well placed to provide the modelling, product design and consulting services required in this challenging time.

The actuarial team is comprised of 55 professionals including 24 qualified actuaries experienced in a wide variety of insurance and risk management related business. We are practical, commercial professionals with a diversity of experience and knowledge which is a trademark of KPMG consultants.

KPMG is the global network of professional advisory firms whose aim is to turn knowledge into value for the benefit of its clients, its people and communities. KPMG has around 650 partners and 11,000 staff operating out of some 26 offices in the UK.

## **PRICEWATERHOUSECOOPERS**

PricewaterhouseCoopers' Actuarial & Insurance Management Solutions (AIMS) practice is a global practice of more than 450 consultants, providing life and non-life actuarial consultancy. With a proven track record across five continents and practices in 14 countries, AIMS offer the global presence, resources and expertise to meet its clients' most critical needs.

Our actuaries regularly provide advice and consulting services to both the insurance industry and broader financial services providers, including life and health insurers, banks, reinsurers, regulators, agents and brokers, bureaux and associations and many of the largest non-life insurers and captives in the world.

PwC is one of the largest providers of non-life actuarial services in the UK. In addition to traditional actuarial consulting services, we offer in-depth industry knowledge and key strategic expertise in the following areas:

- Strategic Mergers & Acquisitions
- Integrated Performance Management and Capital Management
- Claims Process Consulting
- Underwriting Consulting Services
- Run-off Solutions & Insolvency

For more information on these services, visit the PwC AIMS stand in the GIRO Exhibition or contact [maggie.m.foord@uk.pwcglobal.com](mailto:maggie.m.foord@uk.pwcglobal.com)

## **SWISS Re INVESTORS**

Swiss Re Investors is a full service Investment management firm specialising in asset management for insurance companies. We employ a proprietary Asset-Liability Management/Dynamic Financial Analysis process utilising extensive economic and risk modelling to assist in determining a company's optimal investment strategy. The proprietary model employed to assist this process is known as FIRM™ (Financial Integrated Risk Management).

At our stand, conference attendees will find information about the tools used by Swiss Re Investors to assist in asset allocation and insurance company management. Documents that explain our process and model will also be available. If your company has investment issues dealing with the interaction of liabilities and assets, Swiss Re Investors' professionals can assist in delivering the solutions to be found in the use and interpretation of ALM/DFA assessments.

## **WATSON WYATT WORLDWIDE**

Life can be dull - but not non-life (or depending on where you come from General or Property Casualty).

Watson Wyatt Worldwide are pleased to invite you to take part in a thrilling competition of skill.

Pit yourself against the best of the best - prizes galore (well..... almost).

Come and visit our stand if you dare.

But don't stay too long in case you find out more about our hidden secrets:

- Product Design and Premium Rating
- Snow Mobile Racing
- Reserving
- Mergers and Acquisitions
- Pretium
- Dynamic Financial Modelling
- Stress Management
- Strategic Planning

## **CONVENTION PAPERS**

Unfortunately, the majority of working parties this year did not reach the point where it was possible for them to write a paper. As a consequence, there will be very few advance papers for this year's GIRO Convention. In light of this, we have decided that in line with other Faculty and Institute conferences we will not be publishing a volume of papers for GIRO 2001. Much of the material for the Convention will be made freely available on the Professions' website at: [www.actuaries.org.uk/cpd/conf\\_papers.html](http://www.actuaries.org.uk/cpd/conf_papers.html)

## **FAXES AND MESSAGES**

Incoming messages and faxes will be displayed on the MESSAGE BOARD located by the Convention Desk. Please ensure all faxes are marked '2001 GIRO/CAS Convention'. See 'Convention Hotel' for numbers.

## **NAME BADGES**

Please wear your name badge at all times.

## **CHECKING OUT**

Check out times for ALL hotels is 12.00 NOON on day of departure.

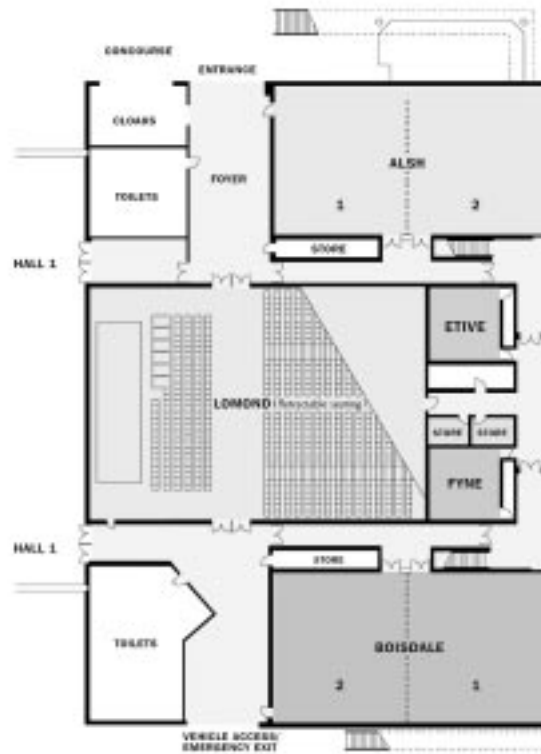
For luggage storage - please contact the Concierge at your allocated hotel.

**MOAT HOUSE AND SCOTTISH EXHIBITION & CONFERENCE CENTRE INTERNAL PLANS**

**MOAT HOUSE HOTEL**



**SCOTTISH EXHIBITION & CONFERENCE CENTRE**



# PROGRAMME

## WEDNESDAY 3 OCTOBER

1100-1400	Registration	Mezzanine Foyer
1200-1400	Lunch	Argyll Suite
1400	Chairman: Richard Winter	Lomond Auditorium
	<b>Welcome</b> <i>Peter Clark, President, Institute of Actuaries</i>	
	<b>Plenary: CEO Survey</b> <i>Speaker: Amy Balska</i>	Lomond Auditorium
	<b>European Weather Derivatives Working Party (an update)</b> <i>Speakers: Fergus Mackie &amp; Michael Eabry</i>	Lomond Auditorium
	<b>Guidance for the Certification of Claims Reserves</b> <i>Speaker: Paul Duffy, Society of Actuaries in Ireland</i>	Lomond Auditorium
	<b>Introduction to GIRO Game</b> <i>Richard Bland</i>	
1600	Tea/Coffee	Argyll/Castle Suite Foyer
1630	<b>Choice of Workshops</b> (See Centre Section - lilac pages)	
	<b>A01</b> Actuarial Certification of Non-Life Reserves - an International Perspective	Alsh 1
	<b>A02</b> Business Planning in Personal Lines using DFA	Alsh 2
	<b>A03</b> Calculating Premium Monitoring/Rate Change Indices	Boisdale 1
	<b>A04</b> CAT Models after the 1999 European Storms	Boisdale 2
	<b>A05</b> <b>CANCELLED</b>	
	<b>A06</b> European Developments	Castle 2
	<b>A07</b> Financial Condition Reporting - Practical Aspects	Castle 3
	<b>A08</b> Market Driven Approach to Pricing	Boardroom
	<b>A09</b> Measuring Customer Value	Barra
	<b>A10</b> PA/WCA Market Issues	Jura
	<b>A11</b> Implementing a CRM Strategy	Shuna
	<b>A12</b> DFA and "DFA lite": Current Events on the Integrated Modeling Front (CAS)	Staffa
	<b>A13</b> Personal Lines Premium Rating	Orkney
	<b>A14</b> Effect of WTC Disaster	Castle 1
	<b>Evening</b> <i>Informal Drinks, buffet supper &amp; live musical entertainment</i> CAS Europe Meeting	Waxy O'Connors Waxy O'Connors
	<b>Casualty Actuaries in Europe</b> This meeting will be held at Waxy O'Connors on the evening of Wednesday 3 October. The meeting will be held in McTurks Bar and will be easily identified by the USA National Flag over the meeting area.	
	<b>THURSDAY 4 OCTOBER</b>	
0700	Breakfast	Individual Hotels
0900	<b>Choice of Workshops</b> (See Centre Section - lilac pages)	
	<b>B01</b> Actuaries: Alternative Careers	Alsh 1
	<b>B02</b> Capital Allocation: Challenges and Options	Alsh 2
	<b>B03</b> Extreme Value Theory	Boisdale 1

<b>B04</b>	New Tax Rules	Boisdale 2
<b>B05</b>	Personal Lines Premium Rating	Castle 1
<b>B06</b>	Pitfalls in Data Mining	Castle 2
<b>B07</b>	Trends in Injury/Liability Awards Across Europe	Castle 3
<b>B08</b>	Trends in the Global Insurance Industry	Boardroom
<b>B09</b>	Compliance Review	Barra
<b>B10</b>	<b>CANCELLED</b>	
<b>B11</b>	<b>CANCELLED</b>	
<b>B12</b>	Risk Premium Project Report (CAS)	Staffa
<b>B13</b>	Effect of WTC Disaster	Jura

**1000** Tea/Coffee Argyll/Castle Suite Foyer

**1030** **Plenary: Trading Places** Lomond Auditorium

**How much common understanding is there between different actuaries?**

**How would a US actuary fare in the UK and vice versa**

*Speakers: David Sanders, Stewart Coutts, Alan Kaufman, Terry Clarke*

**Developing Knowledge on a World Wide Basis** Lomond Auditorium

*Speaker: Bob Conger, President-Elect, CAS*

**General Insurance Board Update** Lomond Auditorium

*Julian Lowe*

**1200** Lunch Argyll Suite

**1330** Chairman: Catherine Barton

**Plenary: The Future of Regulation** Lomond Auditorium

**Update from the Financial Condition Assessment Working Party**

*John Ryan and Working Party*

*Guest Speaker: Rob Jones, Standard and Poors*

**1530** **Choice of Workshops** (See Centre Section - lilac pages)

<b>C01</b>	Actuarial Certification of Non-Life Reserves - an International Perspective	Alsh 1
<b>C02</b>	Business Planning in Personal Lines using DFA	Alsh 2
<b>C03</b>	CAT Models after the 1999 European Storms	Boisdale 1
<b>C04</b>	Credit Analysis of General Insurers and Lloyd's Syndicates	Boisdale 2
<b>C05</b>	<b>CANCELLED</b>	
<b>C06</b>	Market Driven Approach to Pricing	Castle 2
<b>C07</b>	Practical Postcode Analysis for Personal Lines Insurance	Castle 3
<b>C08</b>	Professional Issues	Boardroom
<b>C09</b>	Stochastic Asset Models Revisited	Barra
<b>C10</b>	CAT Modelling in North America	Jura
<b>C11</b>	Insurance E-Business in North America (CAS)	Shuna

**Evening**

*Edinburgh*

*Drinks Reception*

*Edinburgh Dinearound Extravaganza! (See page 3 for details)*

*Dynamic Earth*

**FRIDAY 5 OCTOBER**

**0700** Breakfast Individual Hotels

**0900** **Choice of Workshops** (See Centre Section - lilac pages)

<b>D01</b>	Capital Allocation: Challenges and Options	Alsh 1
<b>D02</b>	Credit Analysis of General Insurers and Lloyd's syndicates	Alsh 2

	<b>D03</b>	<b>CANCELLED</b>	
	<b>D04</b>	Financial Condition Reporting - Practical Aspects	<i>Boisdale 2</i>
	<b>D05</b>	Pitfalls in Data Mining	<i>Castle 1</i>
	<b>D06</b>	Speakers Corner	<i>Castle 2</i>
	<b>D07</b>	Trends in the Global Insurance Industry	<i>Castle 3</i>
	<b>D08</b>	Captives and the Role of Actuary (CAS)	<i>Barra</i>
	<b>D09</b>	Emerging Markets (CAS)	<i>Jura</i>
	<b>D10</b>	<b>CANCELLED</b>	
<b>1000</b>	<b>Plenary:</b>	<b>Effect of the WTC Disaster</b>	<i>Lomond Auditorium</i>
<b>1100-1130</b>		<i>Tea/Coffee</i>	<i>Argyll &amp; Castle Suite Foyer</i>
<b>1130</b>		Chairman: David Hart	
	<b>Plenary:</b>	<b>Lloyd's and the London Market</b>	<i>Lomond Auditorium</i>
		<i>Guest Speaker: Nick Prettejohn, CEO Lloyd's of London</i>	
	<b>APH Update</b>		<i>Lomond Auditorium</i>
		<i>Darren Michaels and Amy Balska</i>	
	<b>D&amp;O and PI Working Party</b>		<i>Lomond Auditorium</i>
		<i>Henry Johnson &amp; Working Party</i>	
<b>1300</b>		<i>Lunch</i>	<i>Argyll Suite</i>
<b>1400</b>		<b>Choice of Workshops</b> (See Centre Section - lilac pages)	
	<b>E01</b>	European Developments	<i>Alsh 1</i>
	<b>E02</b>	After the Event Insurance Market in the UK	<i>Alsh 2</i>
	<b>E03</b>	Measuring Customer Value	<i>Boisdale 1</i>
	<b>E04</b>	New Tax Rules	<i>Boisdale 2</i>
	<b>E05</b>	PA/WCA Market Issues	<i>Castle 1</i>
	<b>E06</b>	Professional Issues	<i>Castle 2</i>
	<b>E07</b>	Stochastic Asset Models Revisited	<i>Castle 3</i>
	<b>E08</b>	Trends in Injury/Liability Awards Across Europe	<i>Boardroom</i>
	<b>E09</b>	Designing Business Intelligence Applications for Insurance Executives (CAS)	<i>Barra</i>
	<b>E10</b>	Finite Risk Reinsurance (CAS)	<i>Jura</i>
	<b>E11</b>	Captives and Role of Actuary (CAS)	<i>Shuna</i>
<b>1500-1545</b>	<b>2002 Working Parties</b>	Initial meetings for those interested in joining working parties for next year's Convention	
<b>1545-1600</b>		<i>Tea/Coffee</i>	
<b>1600</b>	<b>Plenary:</b>	<b>Fair Value Accounting for Insurance</b>	<i>Lomond Auditorium</i>
		<i>Speakers: Michael G McCarter and Peter K Clark</i>	
	<b>Update from the Structured Settlements Working Party</b>		<i>Lomond Auditorium</i>
		<i>John Charles and Working Party</i>	
	<b>Actuarial Predictions and Conference Awards &amp; Close</b>		<i>Lomond Auditorium</i>
		<i>Richard Winter</i>	
	<b>Evening</b>		
		<i>Civic Reception</i>	<i>Kelvingrove Art Gallery &amp; Museum</i>
		<i>Gala Dinner &amp; Scottish Evening</i>	

# List of Delegates

Agelopoulos, Thanos	St Paul International Insurance Co	Clark, Ian	B&W Deloitte
Aghadiuno, Chika	CGNU plc	Clark, Peter	President, Institute of Actuaries
Ahuja, Raj	English Matthews Brockman	Clark, Peter	PricewaterhouseCoopers
Anderson, Duncan	Watson Wyatt Partners	Clarke, Terry	Tillinghast - Towers Perrin
Andersson, Ulrik	Tryg-Baltica P60	Claus, Stefan	B&W Deloitte
Archer-Lock, Philip	B&W Deloitte	Cockroft, Mark	Markel International
Armitage, Luke	CNA Re	Collins, Jon	Equitas Ltd
Armoghan, Mohammed		Conger, Bob	Tillinghast - Towers Perrin
Ashley, Bill	Benfield Blanch Inc.	Conoscente, Jean-Paul	Benfield Group
Azzopardi, Mark	BNP Paribas	Conway, Tom	Ernst & Young LLP
		Cook, Ian	B&W Deloitte
Badal, Veekash	Swiss Reinsurance Co UK Ltd	Copeman, Peter	PricewaterhouseCoopers
Bain, Derek	Ernst & Young	Couper, Andrew	Goshawk Syndicate Management Ltd
Ball, Matthew	Tillinghast - Towers Perrin	Coutts, Stewart	International Actuarial Consultants
Barker, John	St Paul International	Cowell, Julia	AXA Ireland
Barkham, Mike	Ernst & Young	Cowley, Rob	Norwich Union
Barton, Catherine	B&W Deloitte	Crozet, Jean-Bernard	Overseas Partners Ltd
Beck, John	Tillinghast - Towers Perrin	Cutting, David	Saga Services Ltd
Beebee, Barbara	Institute of Actuaries	Czajkowski, Tony	ACE Insurance SA-NV
Benjamin, Rodney	Bacon & Woodrow	Czernuszewicz, Andrzej	EMB Zysk Ltd
Bennett, Camilla	PricewaterhouseCoopers		
Bennett, Martyn	Co-operative Insurance Society Ltd	Daly, Carmel	Aon Risk Consultants
Beveridge, Hazel	KPMG	Daters, Mark	GeneralCologne Re UK Limited
Bijl, Peter	Nationale-Nederlanden	Derrig, Richard	Automobile Insurance Bureau
Bishop, David	Unionamerica Insurance Co Ltd	Desantis, Sergio	ANIA
Bissett, Brian	Catlin Underwriting Agencies Ltd	De Swardt, Arrie	Outsurance
Biswas, Shamit	PricewaterhouseCoopers	Dodridge, Phil	QBE Insurance
Blake, Steven	Groupama Insurance	Doman, Richard	Ernst & Young
Bland, Richard	Watson Wyatt Partners	Donlevy, Neil	CIS Insurance Ltd
Bloxham, Andrew	Wellington Underwriting	Dore, Marian	London Life & General Re
Bogue, Kevin	Ecclesiastical Insurance	Duffy, Paul	Quantum Actuarial Consultants
Boit, Francois	B&W Deloitte	Duncan, Fred	PricewaterhouseCoopers
Bolton, Clive	General Insurance	Dunkley, Neil	Prudential Assurance Co Ltd
Bonnard, Rodney	Ernst & Young		
Borrett, James	Faraday Reinsurance Co Ltd	Eabry, Michael	PricewaterhouseCoopers
Botelho, Barry	AXA Insurance	Einck, Nancy	Chartwell Managing Agents
Boulter, Tony	Swiss Reinsurance Company	England, Peter	English Matthews Brockman
Bouska, Amy	Tillinghast	English, Andrew	English Matthews Brockman
Bradley, Cormac	Tillinghast - Towers Perrin		
Bradley, Helen	XL Brocbbank Underwriting Ltd	Faulkner, James	CNA Re
Bradshaw, Tony	Tillinghast - Towers Perrin	Finnis, Dave	Tillinghast - Towers Perrin
Branch, Vince	PricewaterhouseCoopers	Flower, Mark	St Paul at Lloyds
Brickman, Simon	NAC Reinsurance International Ltd	Ford, Andrew	Royal & SunAlliance
Brockman, Mike	English Matthews Brockman	Forster, Will	Cox Insurance
Broughton, Jonathan	Equitas Ltd	Fortunato, Francis	
Brown, David	Halifax General Insurance Services Ltd	Fox, Peter	Riverstone Management Ltd
Bruce, Neil	PricewaterhouseCoopers	French, Doug	Ernst & Young
Buckley, Nicholas	Tillinghast - Towers Perrin	Fromentin, Pierre	Groupe Desjardins
Bulmer, Richard	Watson Wyatt Partners	Frydas, Paul	KPMG
Burke, Martin	Wellington Underwriting Agencies Ltd	Fuller, Derek	CIS Ltd
Butsic, Bob	Fireman's Fund Insurance	Furber, Lloyd	GE Frankona
Button, Andrew	Saga Services Ltd		
Byrne, Kathy	Pinnacle Insurance plc	Gagnon, Luc	Max Re
		Gard, Warrick	Ernst & Young ABC
Calder, Sally	Institute of Actuaries	Gesick, Eric	St Paul International
Callan, Gary	Zurich London Ltd	Gibbs, Jefferson	KPMG
Campbell, Nick	Centre Solutions	Gibson, Liz	B&W Deloitte
Carpenter, Nigel	Norwich Union	Gifford, David	PricewaterhouseCoopers
Chapman, Alastair	CNA Re	Gillott, Nigel	Watson Wyatt Partners
Charles, John	Tillinghast - Towers Perrin	Goldby, Andrew	Groupama Insurance
Cheesman, Dick	AXA Insurance	Goodchild, James	KPMG
Child, Neil	Limit Underwriting Ltd	Graham, Mark	Chaucer Syndicates Ltd
Chu, Kuei-Hsia Ruth	Fubon Insurance Co Ltd	Granatt, Andy	GAAPS Intl Search & Selection Ltd
Churchlow, Mark	Cornhill Insurance plc	Green, Martyn	M & S Financial Services

Green, Peter	Cavell Management Services	Leigh, Julian	Tillinghast - Towers Perrin
Greenhalgh, Richard	Chartwell Managing Agents	Levi, Charles	Guy Carpenter
Gyssler, Helen	Trans Re Zurich	Lim, Adrian	Tillinghast - Towers Perrin
		Linden, Orin	Ernst & Young
Hale, Emma	Swiss Re Investors Ltd	Littlefair, Chris	Watson Wyatt Partners
Hallett, Neil	Royal & SunAlliance	Liu, Yan	Churchill Insurance
Hamano, Masaaki	Mitsui Marine & Fire Insurance Co Ltd	Liverpool, Bertha	Tillinghast - Towers Perrin
Hamilton, Alex	Norwich Union Insurance Group	Lowe, Julian	Norwich Union
Hammond, Barbara	B&W Deloitte	Lyons, Graham	Tillinghast - Towers Perrin
Harding, Justyn	Marlborough		
Harrar, Sukie	Reliance National Insurance Co (Europe)	McCarter, Mike	American International Group
Harris, Matthew	B&W Deloitte	McConnell, Bill	Lloyd's of London
Harris, Simon	Moody's Investors Service Ltd	McGarva, Adrian	Benfield Greig Ltd
Hart, David	B&W Deloitte	McGrath, Sean	Allianz Ireland
Hawes, Wendy	Financial Services Authority	Mackie, Fergus	KPMG
Hazzard, Matthew	HartRe	Macnair, Andrew	Financial Services Authority
Herzfeld, John	Milliman USA	McPherson, James	St Paul Syndicate Management Ltd
Hess, Todd	Alleghany Underwriting Ltd	Maguire, Matthew	AON Worldwide Resources
Hilder, Ian	Ernst & Young	Maher, George	Tillinghast - Towers Perrin
Hill, Gavin	Zurich Financial Services (UKISA) Ltd	Malde, Shailesh	CGNU plc
Hill, Stephen	Norwich Union	Malone, Mark	PricewaterhouseCoopers
Hillon, James	CIS Insurance	Martin, Paul	Catlin Underwriting Agencies Ltd
Hindley, David	B&W Deloitte	Massey, Roger	Prudential
Hinton, Peter	Financial Services Authority	Masters, Graham	Norwich Union General Insurance
Hitchcox, Andrew	Swiss Re UK	Matthews, Peter	English Matthews Brockman
Horel, Viviane	Groupama	Maxie, Bonnie	London Life & General Reinsurance
Howard, Sheree	NIG	Maximchuk, Tony	Swiss Re Investors Ltd
Hubbard, Andrew	Mazars Neville Russell	Maxwell, Grant	Gerling Group Fincl Products Europe Ltd
Hughes, Jon	Guy Carpenter	Mellor, Chris	ACE-INA Services (UK)
Hulme, Andy	Lloyds TSB Insurance	Metzner, Claus	Zurich Financial Services Group
Hurley, Ellis	Royal & SunAlliance	Michael, Liz	English Matthews Brockman
Huston, Brian	Hibernian Insurance	Michaels, Darren	Tillinghast - Towers Perrin
Hyllested, Lars	Equitas	Millns, Richard	Aon Limited
		Miranthis, Costas	Tillinghast - Towers Perrin
Ibeson, David	Wellington Underwriting Agencies Ltd	Mitchell, Grant	CIS Ltd
		Mitchell, Nicola	Norwich Union Insurance Group
Jackson, Roger	William M Mercer Ltd	Monk, Joe	Lane Clark & Peacock
James, Gillian	Benfield Greig Ltd	Monk, Richard	CGNU plc
Johal, Gurpreet	B&W Deloitte	Montgomery, Jack	Prudential
Johnson, Chris	Tillinghast - Towers Perrin	Moore, Declan	AXA Insurance
Johnson, Henry	Lloyd's of London	Morgan, Kathryn	CIS Ltd
Johnson, Peter		Morris, Colin	Lloyds TSB Insurance
Jones, Carrie	Commercial Union Assurance plc	Morris, Ian	Bacon & Woodrow
Jones, Hayley	Peter Rand Group Ltd	Moss, Gaynore	B&W Deloitte
Jones, Stephen	CIS Ltd	Mowbray, Pamela	English Matthews Brockman
Jones, Tony	Ernst & Young	Murdoch, Colin	AXA Insurance
Jordan, Tony	Aon Risk Consultants	Murphy, Bill	Milliman USA
Jowett, Tom	GE Frankona	Murphy, Karl	English Matthews Brockman
Julian, Mark	Equitas Ltd	Murray, Paul	English Matthews Brockman
Karim, James	Guy Carpenter	Narvell, John	Winterthur International
Kaufman, Allan	B&W Deloitte	Newbury, Karen	PricewaterhouseCoopers
Kedney, Paul	Milliman UK	Newman, Andrew	PricewaterhouseCoopers
Kelsey, Richard	Cornhill Insurance plc	Newman, Tony	Ernst & Young
Kerley, Colin	Classic Solutions UK Ltd	Newton, Derek	
Kirk, Jerome	KWELM Management Services Ltd	Nicholson, Erica	PricewaterhouseCoopers
Kirschner, Gerry	Classic Solutions Risk Management Inc	Niven, Clive	Equitas Ltd
Klauke, Paul	Zurich Corporate Solutions		
Koritzinsky, Arthur	Marsh USA, Inc.		
Lacoss, Doug	Zurich London Management Ltd	Olson, Christy	St Paul Syndicate Management
Laird, Sean	Tillinghast - Towers Perrin	O'Neill, John	Milliman UK
Lang, David	LIMIT Underwriting Ltd	Ooi, Peng Kee	Swiss Reinsurance Co UK Ltd
Larson, Steve	Royal & SunAlliance Insurance Group	Orbell, Jonathan	Norwich Union
Law, Debbie	Omni Whittington	O'Reilly, Kate	AXA Ireland
Lee, Alex	Ernst & Young LLP	Orr, James	Lloyd's of London
Lee, Randy	AXA GITO	Overton, Gregory	PricewaterhouseCoopers

Paddam, Paddy	PricewaterhouseCoopers	Stirling, Peter	Institute of Actuaries
Papachristou, Dimitris	Benfield Greig Ltd	Stock, Richard	National House Building Council (NHBC)
Patel, Alan	NFU Mutual Insurance Society Ltd	Stoop, Christian	Groupe des Assurances Nationales
Patel, Kiran	Zurich London Ltd	Storey, Liam	Norwich Union
Peace, Sally	Wellington Underwriting Agencies Ltd	Streff, James	Thazar Solutions Corporation
Pearse, Tony	Horizon Portfolio Management Ltd		
Pepponi, Barbara	Gan Italia Spa	Tang, Oliver	Thomas Miller & Co Ltd
Perkins, Jon	CNA Re	Tanser, James	Watson Wyatt Partners
Perret, Claude	Danish Re	Tavner, Peter	Lloyds of London
Perry, Geoff	Aon Risk Consultants	Taylor, Matt	XL Financial Solutions
Pettengell, Craig	St Paul Re	Tedeschi, John	Guy Carpenter & Company
Phillips, Ian	Tillinghast - Towers Perrin	Theaker, David	Cornhill Insurance plc
Phillips, Rich	Georgia State University	Theaker, Mark	Wellington Underwriting Agencies Ltd
Pines, Lisa	Hymans Robertson	Thorne, Joe	
Poracchia, Alex	Swiss Reinsurance Co UK Ltd	Tippin, Philip	KPMG
Prescott, Esther	Wellington Underwriting Agencies Ltd	Titman, Jon	Guy Carpenter
Pryde, Andrew	PricewaterhouseCoopers	Towell, Phil	Lane Clark & Peacock
		Townley, Laurence	Tillinghast - Towers Perrin
Quane, Alessa	AIG Europe	Tranchard, Alban	Swiss Reinsurance Co Ltd
		Tripp, Michael	Watson Wyatt Partners
Rakow, James	B&W Deloitte	Tsanakas, Andreas	Lloyds
Ravetto, Francesca	ANIA	Tysoe, Paul	Liverpool Victoria Friendly Society
Ray, Tony	Norwich Union Insurance Group		
Regan, Natasha	Groupama Insurance	Van Delm, Rudi	Ernst & Young LLP
Rice, Hugh	Markel International plc	Van den Heever, Rolf	Hannover Reinsurance Africa Ltd
Richardson, John	Norwich Union	Varnell, Elliot	B&W Deloitte
Rix, Stephen	Wurttembergische UK Ltd	Vazquez, Jose	Zurich London
Roberts, Dix	Royal & SunAlliance Insurance Group	Verrall, Richard	The City University
Robinson, Esmee	PricewaterhouseCoopers	Visner, Steven	Ernst & Young LLP
Roche, Nicola	Cornhill Insurance plc	Visser, Marthinus	Outsurance
Rodriguez, Richard	Ernst & Young		
Ross, Fiona	St Paul Re	Wackrow, James	Chaucer Syndicates Ltd
Ross, Julian	Alleghany Underwriting Ltd	Wagner, Claude	London Life
Ross, Nick	Norwich Union General Insurance	Walsh, Lisa	London Life & General Re
Roy, Jean	CGNU plc	Warner, Desiree	KWELM Management Services Ltd
Russell, Cheryl	PricewaterhouseCoopers	Warren, John	Zurich Insurance Co
Ryan, Jim	Tillinghast - Towers Perrin	Waters, Les	St Paul Reinsurance Company Ltd
Ryan, John	Tillinghast - Towers Perrin	Watford, Nick	PricewaterhouseCoopers
Ryan, Martin	Allianz Ireland	Webb, Phil	HSBC
		Weir, Nick	Royal & SunAlliance
Salvatori-Kennedy, Laura	Tillinghast - Towers Perrin	Wells, Gary	Milliman UK
Sanders, David	Milliman UK	Welsh, Gabriel	Markel International plc
Sands, Emma	PricewaterhouseCoopers	Westrip, Alan	CGNU plc
Sausse, Alan	Chaucer Insurance	White, Brian	Swiss Re Investors Ltd
Schaefer, Knut	English Matthews Brockman	White, Chuck	Benfield Blanch
Schmitz, Mike	Milliman USA	White, Martin	Equitas Ltd
Searle, Adam	Norwich Union	Whiting, Andy	KPMG
Senator, Ian	Actuarial Education Co	Widdows, James	Resolute Management
Seth, Anup	Mysis Interactive Trading Ltd	Wilcox, Stephen	Cornhill Insurance
Shah, Alpesh	PricewaterhouseCoopers	Wilkinson, Helen	PricewaterhouseCoopers
Shah, Shreyas	PricewaterhouseCoopers	Wilkinson, Mark	Guy Carpenter
Sharp, Dominic	PricewaterhouseCoopers	Wilson, Edgar	CNA Re
Shaw, Richard	Credit Lyonnais	Winter, Richard	Prudential Assurance Co Ltd
Shepley, Stuart	ACE Tempest Re	Wolf, Robert	William M Mercer inc
Shuker, Norman	Pinnacle Insurance plc	Wong, Jenny	Tillinghast - Towers Perrin
Simmons, David	Insurance & Friendly Societies Division	Wong, Simon	Milliman USA
Skelding, Richard	Norwich Union plc	Wood, Richard	Norwich Union Insurance Group
Skinner, David	XL Re Ltd	Wrenn, Stuart	Winterthur International
Skinner, Justin	Watson Wyatt Partners		
Skurnick, David	F&G Re Inc	Younsi, Said	XL Brockbank
Smerald, Christopher	AIG Europe		
Smith, Andrew	B&W Deloitte		
Smith, Andrew	PricewaterhouseCoopers		
Smith, Peter	Chartwell Managing Agents		
Snow, Rob	Transatlantic Re		
Sommerfeld, Frank	EMB Deutschland		
Spence, Alan	KPMG		