



# Hierarchical Growth Curve Models for Loss Reserving

CAS Annual Meeting  
Seattle  
November, 2008

Jim Guszczka, FCAS, MAAA  
Deloitte Consulting

# Topics

---

---

Background

---

Hierarchical Modeling Theory

---

Motivating Example

---

Hierarchical Models and Credibility Theory

---

Loss Reserving: Growth Curve Models

---



# Background

Models vs Methods

Need for Variability Estimates

# Loss Reserving and its Discontents

---

- Much loss reserving practice is “pre-theoretical” in nature.
  - Techniques like chain ladder, BF, and Cape Cod aren’t performed in a statistical modeling framework.
- Traditional **methods** aren’t necessarily optimal from a statistical POV.
  - Potential of over-fitting small datasets.
  - Difficult to assess goodness-of-fit, compare nested models, etc.
  - Often no concept of out-of-sample validation or diagnostic plots.
- Related point: traditional methods produce point estimates only.
  - Reserve variability estimates in practice are often ad hoc.
- Stochastic reserving: build statistical **models** of loss development.
  - Attempt to place loss reserving practice on a sound scientific footing.
  - Field is developing rapidly.
  - Today: explore non-linear hierarchical models (aka “nonlinear mixed effects models”) as natural, parsimonious models of the loss development process.
  - Motivated by Dave Clark paper [2003].



# Hierarchical Modeling Theory

Hierarchical Data Structures

Hierarchical Models

Motivating Samples

# What is Hierarchical Modeling?

---

- Hierarchical modeling is used when one's data is *grouped* in some important way.
  - Claim experience by state or territory
  - Workers Comp claim experience by class code
  - Income by profession
  - Claim severity by injury type
  - Churn rate by agency
  - Multiple years of loss experience by policyholder.
  - ...
- Often grouped data is modeled either by:
  - Pooling the data and introducing dummy variables to reflect the groups
  - Building separate models by group
- Hierarchical modeling offers a "third way".
  - Parameters reflecting group membership enter one's model through appropriately specified *probability sub-models*.

# What's in a Name?

---

- Hierarchical models go by many different names
  - Mixed effects models
  - Random effects models
  - Multilevel models
  - Longitudinal models
  - Panel data models
- We prefer the “hierarchical model” terminology because it evokes the way models-within-models are used to reflect levels-within-levels of ones data.
- An important special case of hierarchical models involves multiple observations through time of each unit.
  - Here group membership is the repeated observations belonging to each individual.
  - Time is the covariate.

# Common Hierarchical Models

---

- Notation:

- Data points  $(\mathbf{X}_i, Y_i)_{i=1\dots N}$
- $j[i]$ : data point  $i$  belongs to group  $j$ .

- **Classical Linear Model**

- Equivalently:  $Y_i \sim N(\alpha + \beta X_i, \sigma^2)$
- Same  $\alpha$  and  $\beta$  for every data point

$$Y_i = \alpha + \beta X_i + \varepsilon_i$$

- **Random Intercept Model**

- Where  $\alpha_j \sim N(\mu_\alpha, \sigma_\alpha^2)$  &  $\varepsilon_i \sim N(0, \sigma^2)$
- Same  $\beta$  for every data point; but  $\alpha$  varies by group

$$Y_i = \alpha_{j[i]} + \beta X_i + \varepsilon_i$$

- **Random Intercept and Slope Model**

- Where  $(\alpha_j, \beta_j) \sim N(\mathbf{M}, \Sigma)$  &  $\varepsilon_i \sim N(0, \sigma^2)$
- Both  $\alpha$  and  $\beta$  vary by group

$$Y_i = \alpha_{j[i]} + \beta_{j[i]} X_i + \varepsilon_i$$

$$Y_i \sim N(\alpha_{j[i]} + \beta_{j[i]} \cdot X_i, \sigma^2) \quad \text{where} \quad \begin{pmatrix} \alpha_j \\ \beta_j \end{pmatrix} \sim N\left(\begin{bmatrix} \mu_\alpha \\ \mu_\beta \end{bmatrix}, \Sigma\right), \quad \Sigma = \begin{bmatrix} \sigma_\alpha^2 & \sigma_{\alpha\beta} \\ \sigma_{\alpha\beta} & \sigma_\beta^2 \end{bmatrix}$$

# Parameters and Hyperparameters

---

- We can rewrite the random intercept model this way:

$$Y_i \sim N(\alpha_{j[i]} + \beta X_i, \sigma^2) \quad \alpha_j \sim N(\mu_\alpha, \sigma_\alpha^2)$$

- This model contains 9 parameters:  $\{\alpha_1, \alpha_2, \dots, \alpha_8, \beta\}$ .
- And it contains 4 hyperparameters:  $\{\mu_\alpha, \beta_2, \sigma, \sigma_\alpha\}$ .
- Here is how the hyperparameters relate to the parameters:

$$\hat{\alpha}_j = Z_j \cdot (\bar{y}_j - \beta \bar{x}_j) + (1 - Z_j) \cdot \hat{\mu}_\alpha \quad \text{where} \quad Z_j = \frac{n_j}{n_j + \sigma^2 / \sigma_\alpha^2}$$

- Does this formula look familiar?

# Motivating Example: Longitudinal Data Set

- Suppose we wish to model a company's policies in force, by region, for the years 2005-08.
- $8 * 4 = 32$  data points.

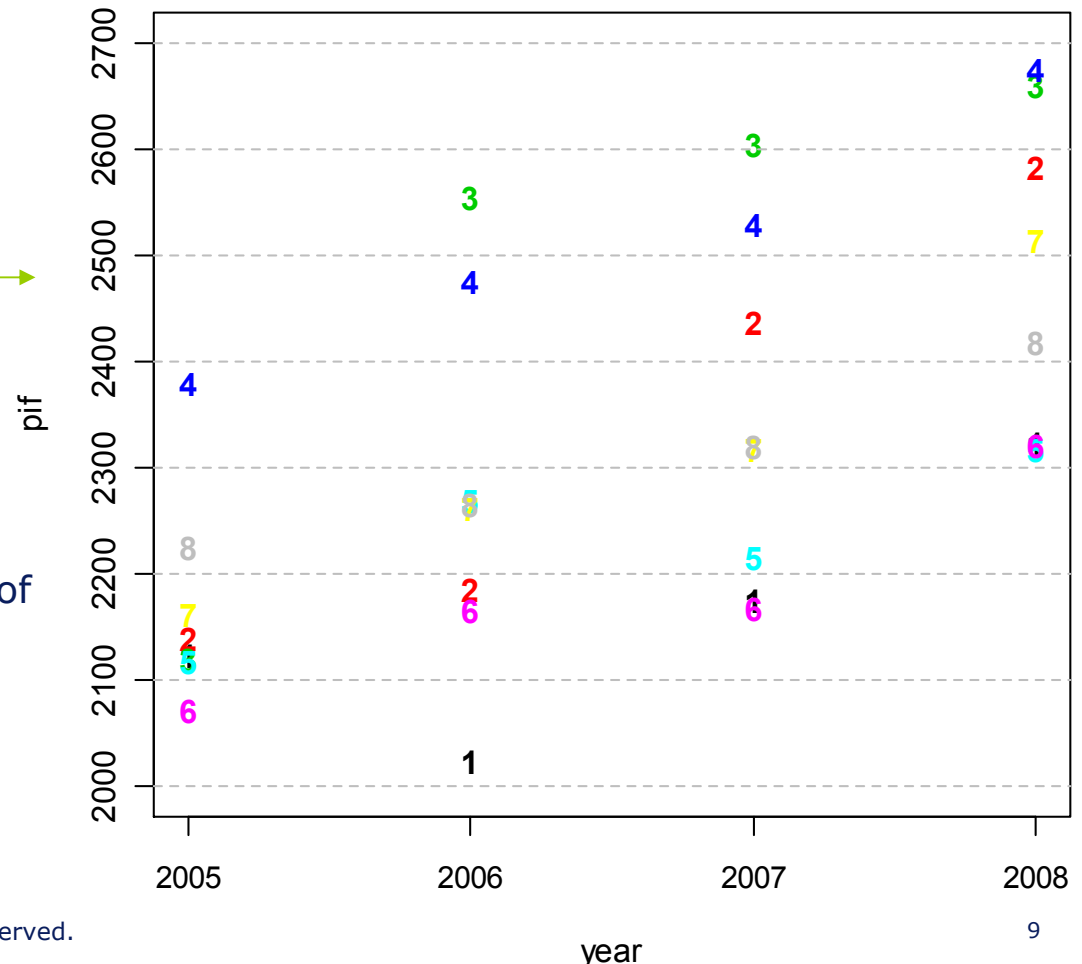
- One way to visualize the data:
  - Plot all of the data points on the same graph, use different colors/symbols to represent region.

- Alternate way:
  - Use a trellis-style display, with one plot per region
  - More immediate representation of the data's hierarchical structure.
  - (see next slide)

**Note bene: this is just a simple stylized example using made-up data!**

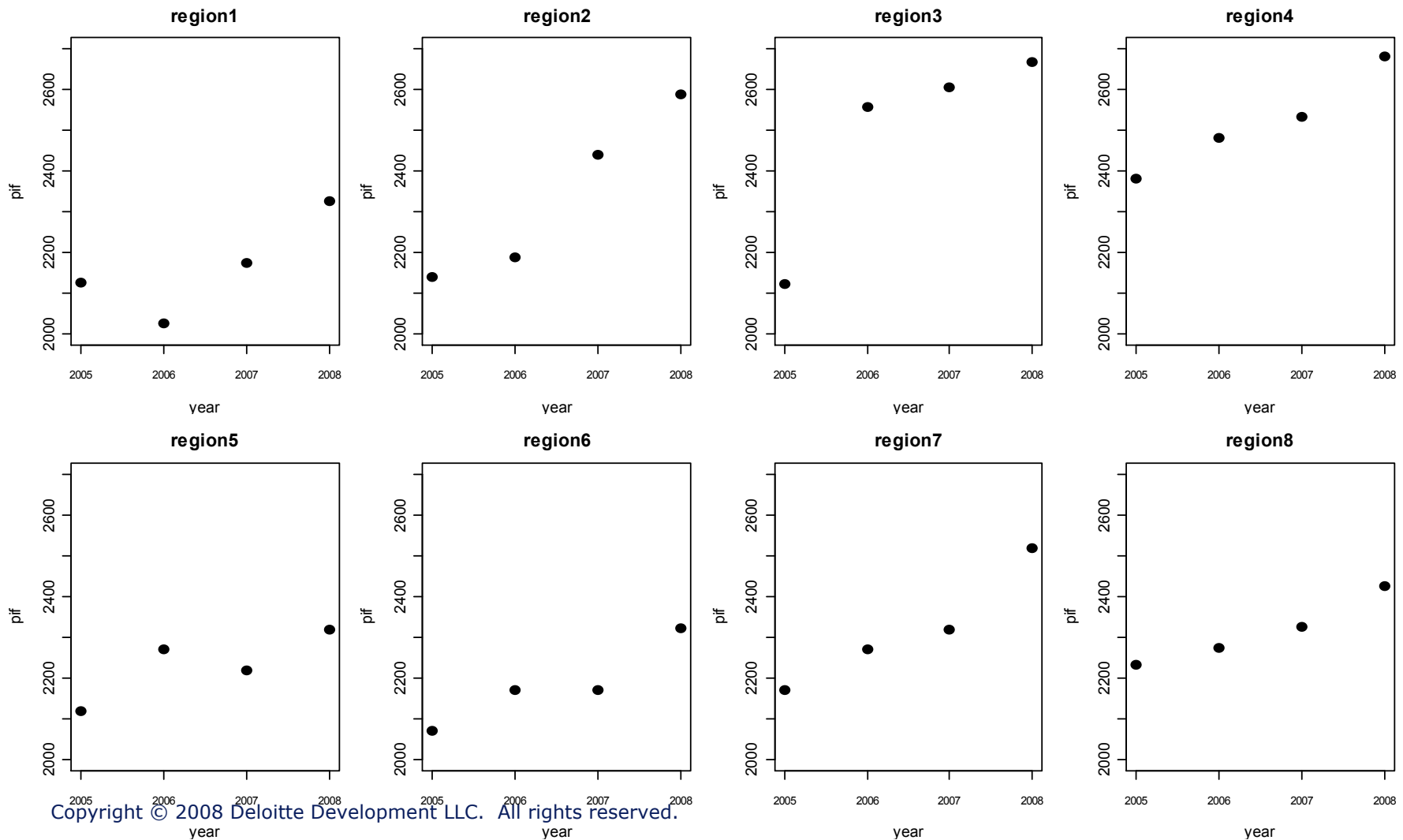
Copyright © 2008 Deloitte Development LLC. All rights reserved.

Policies in Force by Year and Region



# Trellis-Style Data Display

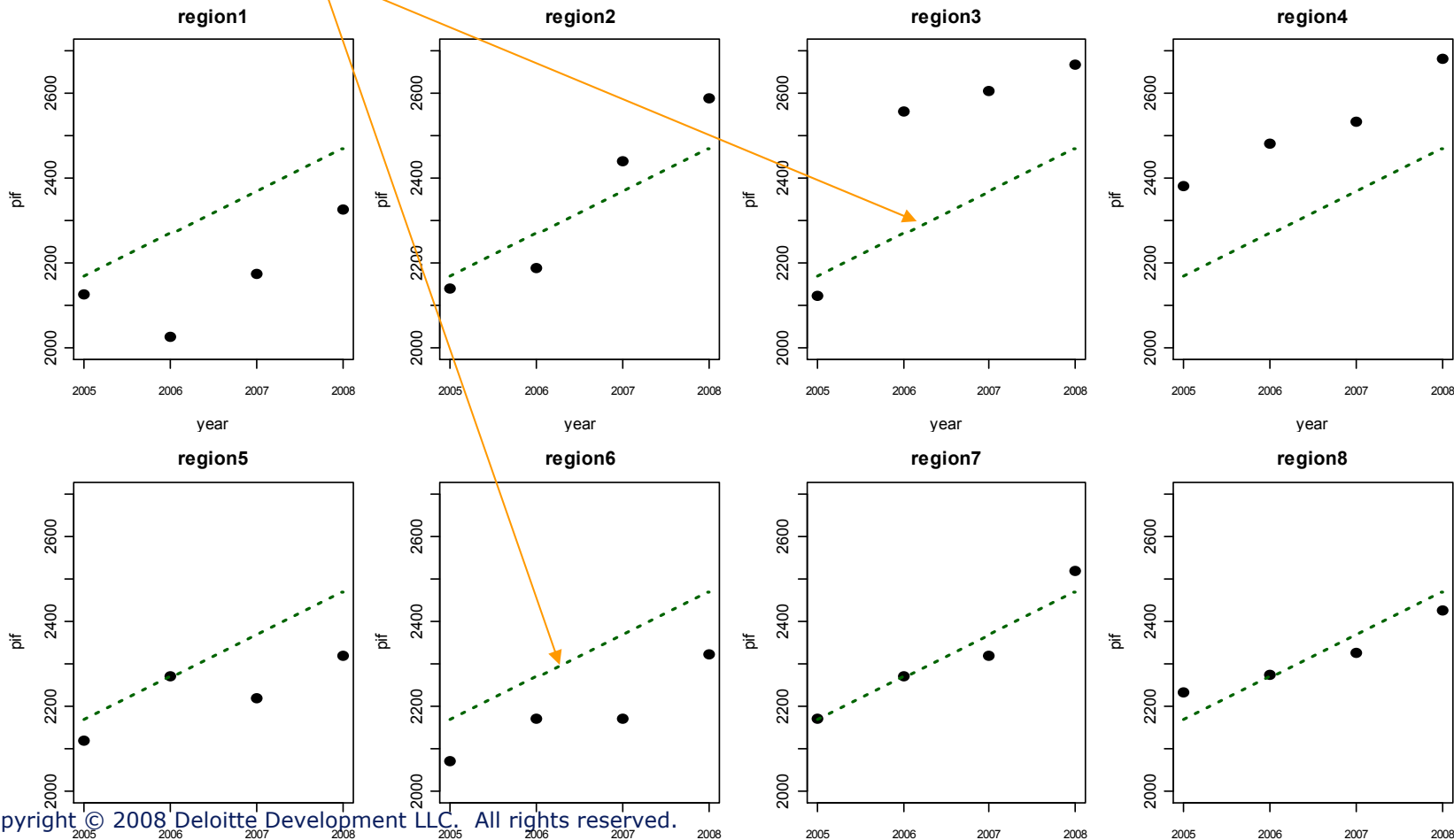
- We wish to build a model that captures the change in PIF over time.
- We must reflect the fact that PIF varies by region.



# Option 1: Simple Regression

- The easiest thing to do is to pool the data across groups -- **i.e. simply ignore region**
- Fit a simple linear model
- Alas, this model is not appropriate for all regions

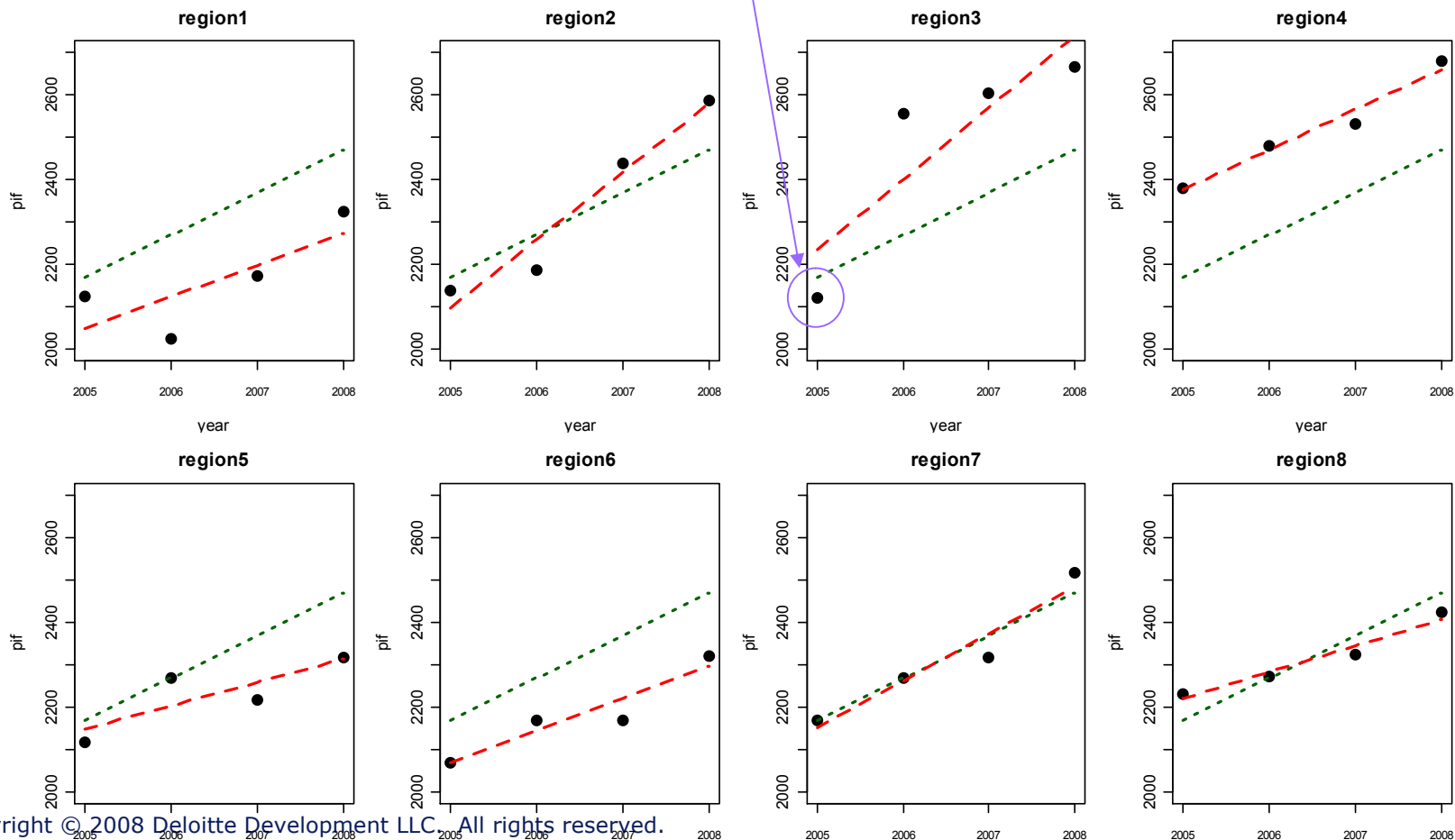
$$PIF = \alpha + \beta t + \varepsilon$$



# Option 2: Separate Models by Region

- At the other extreme, we can fit a separate simple linear model for each region.
- Each model is fit with 4 data points.
- Introduces danger of over-fitting the data.

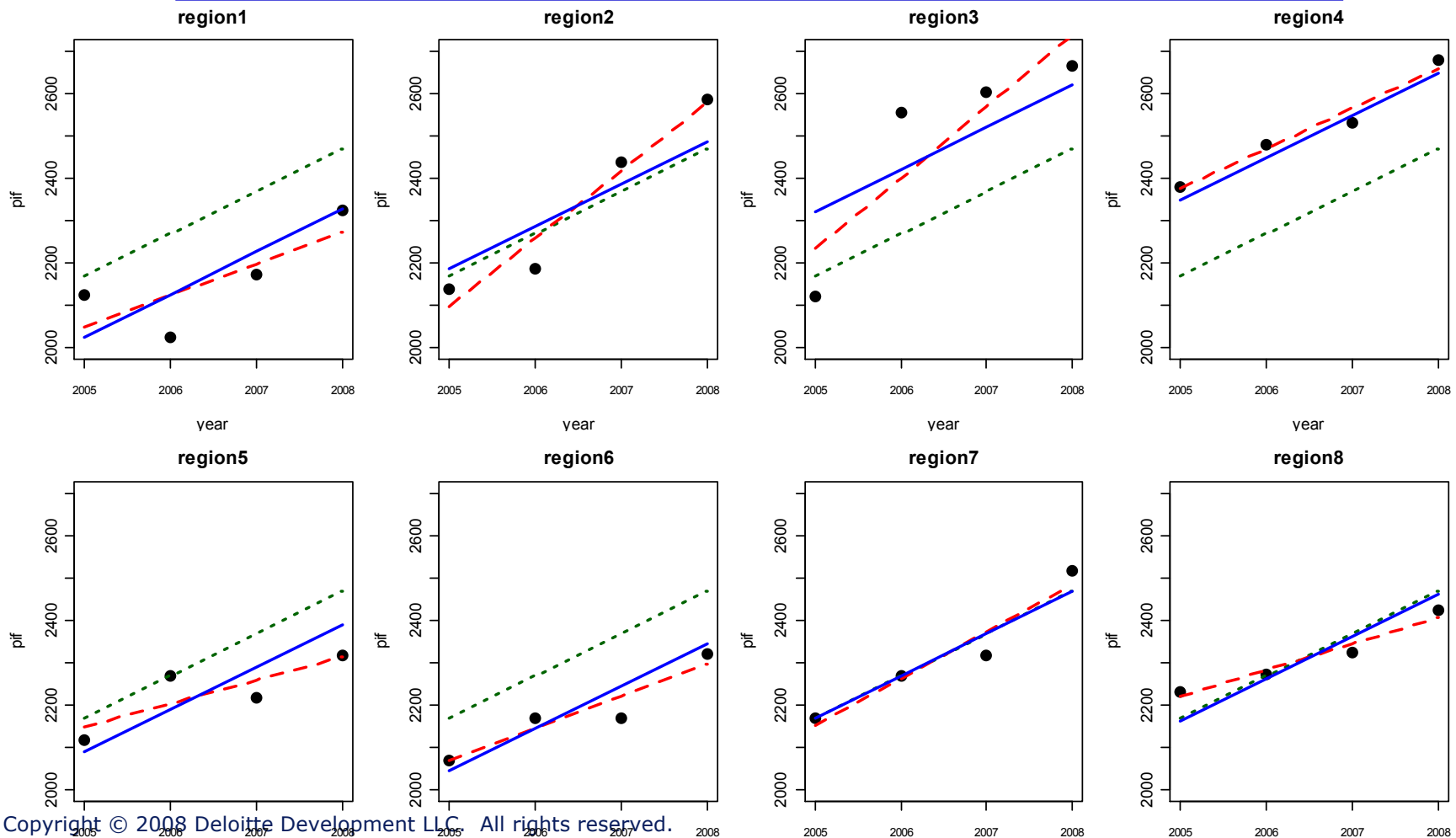
$$\left\{ PIF = \alpha^k + \beta^k t + \varepsilon^k \right\}_{k=1,2,\dots,8}$$



# Option 3: Random Intercept Hierarchical Model

- Compromise: Reflect the region group structure using a hierarchical model.

$$PIF \sim N(\alpha_{j[i]} + \beta t, \sigma^2) \quad \alpha_j \sim N(\mu_\alpha, \sigma_\alpha^2)$$



# Compromise Between Complete Pooling & No Pooling

---

$$PIF = \alpha + \beta t + \varepsilon$$

## Complete Pooling

- Ignore group structure altogether

$$\{PIF = \alpha^k + \beta^k t + \varepsilon^k\}_{k=1,2,\dots,8}$$

## No Pooling

- Estimating one model for each group



## Compromise

### Hierarchical Model

- Estimates parameters using a compromise between complete pooling and no pooling.

$$PIF \sim N(\alpha_{j[i]} + \beta t, \sigma^2) \quad \alpha_j \sim N(\mu_\alpha, \sigma_\alpha^2)$$

## Option 1b: Adding Dummy Variables

---

- Question: of course it'd be crazy to fit a separate SLR for each region.
- But what about adding 8 region dummy variables into the SLR?

$$PIF = \gamma_1 R_1 + \gamma_2 R_2 + \dots + \gamma_8 R_8 + \beta t + \varepsilon$$

- If we do this, we need to estimate 9 parameters instead of 2.
- In contrast, the random intercept model contains 4 hyperparameters:  
 $\mu_\alpha, \beta, \sigma, \sigma_\alpha$
- Now suppose our example contained 800 regions. If we use dummy variables, our SLR potentially requires that we estimate 801 parameters.
- But the random intercept model will contain the same 4 hyperparameters.
  - Hierarchical models offer a way to handle “massively categorical variables”.

# Varying Slopes

---

- The random intercept model is a compromise between a “pooled” SLR and a separate SLR by region.

$$PIF \sim N(\alpha_{j[i]} + \beta t, \sigma^2) \quad \alpha_j \sim N(\mu_\alpha, \sigma_\alpha^2)$$

- But there is nothing sacred about the intercept term: **we can also allow the slopes to vary by region.**

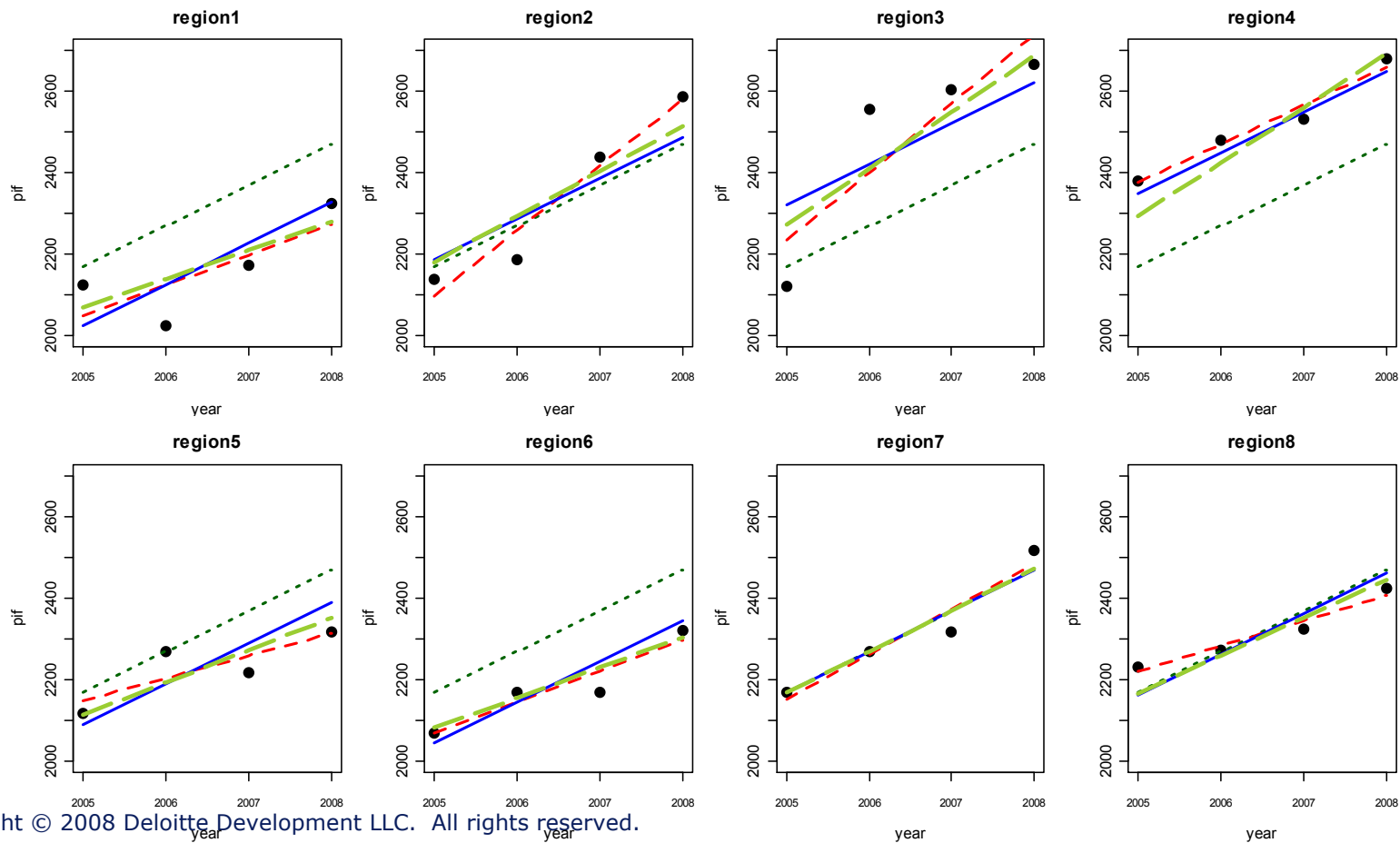
$$Y_i \sim N(\alpha_{j[i]} + \beta_{j[i]} \cdot X_i, \sigma^2) \quad \text{where} \quad \begin{pmatrix} \alpha_j \\ \beta_j \end{pmatrix} \sim N\left(\begin{bmatrix} \mu_\alpha \\ \mu_\beta \end{bmatrix}, \Sigma\right), \quad \Sigma = \begin{bmatrix} \sigma_\alpha^2 & \sigma_{\alpha\beta} \\ \sigma_{\alpha\beta} & \sigma_\beta^2 \end{bmatrix}$$

- In the dummy variable option (1b) this would require us to interact region with the time  $t$  variable... i.e. it would return us to option 2.
  - Great danger of overparameterization.
- Adding random slopes adds considerable flexibility at the cost of only two additional hyperparameters.
  - Random slope only:  $\mu_\alpha, \beta, \sigma, \sigma_\alpha$
  - Random slope & intercept:  $\mu_\alpha, \mu_\beta, \sigma, \sigma_\alpha, \sigma_\beta, \sigma_{\alpha\beta}$

# Option 4: Random Slope & Intercept Hierarchical Model

- We can similarly include a sub-model for the slope  $\beta$ .

$$PIF_i \sim N(\alpha_{j[i]} + \beta_{j[i]} \cdot t_i, \sigma^2) \quad \text{where} \quad \begin{pmatrix} \alpha_j \\ \beta_j \end{pmatrix} \sim N([\mu_\alpha, \mu_\beta], \Sigma) \quad , \quad \Sigma = \begin{bmatrix} \sigma_\alpha^2 & \sigma_{\alpha\beta} \\ \sigma_{\alpha\beta} & \sigma_\beta^2 \end{bmatrix}$$



# Does Adding Random Slopes Improve the Model?

---

- How do we determine whether adding the random slope term improves the model?

## 1. Graphical analysis and judgment:

- the random slopes arguably yield an improved fit for Region 5.
- but it looks like the random slope model might be overfitting Region 3.
- Other regions a wash

## 2. Out of sample lift analysis.

## 3. Akaike information Criterion [AIC]: $-2*LL + 2*d.f.$

- Random intercept AIC: 380.40
- Random intercept & slope AIC: 380.64
- Slight deterioration → better to select the random intercept model.

```
> anova(option3, option4)
      Model df      AIC      BIC    logLik  Test  L.Ratio p-value
option3     1   4 380.4011 386.0058 -186.2005
option4     2   6 380.6387 389.0459 -184.3194 1 vs 2 3.762325 0.1524
```

- Random slopes don't help in this example, but it is a very powerful form of variable interaction to consider in one's modeling projects.

# Parameter Comparison

- It is important to distinguish between each model's *parameters* and *hyperparameters*.

$$\alpha, \beta$$

$$\mu_\alpha, \beta, \sigma, \sigma_\alpha$$

$$\mu_\alpha, \mu_\beta, \sigma, \sigma_\alpha, \sigma_\beta, \sigma_{\alpha\beta}$$

	SLR		random intercept		random intercept & slope	
region	intercept	slope	intercept	slope	intercept	slope
1	2068.0	100.1	1911.3	100.1	1999.3	70.3
2	2068.0	100.1	2087.8	100.1	2070.2	111.2
3	2068.0	100.1	2236.1	100.1	2137.0	137.4
4	2068.0	100.1	2267.3	100.1	2159.6	133.2
5	2068.0	100.1	1980.3	100.1	2033.1	79.3
6	2068.0	100.1	1932.3	100.1	2008.9	73.8
7	2068.0	100.1	2066.8	100.1	2066.3	101.2
8	2068.0	100.1	2061.8	100.1	2069.5	94.1

- SLR: 2 parameters and 2 hyperparameters
  - Random intercept: 11 parameters and 4 hyperparameters
  - Random intercept & slope: 20 parameters and 6 hyperparameters
- How do the hyperparameters relate to the parameters?**



# Connection with Credibility Theory

# Hierarchical Models and Credibility Theory

---

- Let's revisit the random intercept model.

$$PIF \sim N(\alpha_{j[i]} + \beta t, \sigma^2) \quad \alpha_j \sim N(\mu_\alpha, \sigma_\alpha^2)$$

- This is how we calculate the random intercepts  $\{\alpha_1, \alpha_2, \dots, \alpha_8\}$ :

$$\hat{\alpha}_j = Z_j \cdot (\bar{y}_j - \beta \bar{t}_j) + (1 - Z_j) \cdot \hat{\mu}_\alpha \quad \text{where} \quad Z_j = \frac{n_j}{n_j + \sigma^2 / \sigma_\alpha^2}$$

- Therefore: each random intercept is a **credibility-weighted average** between:
  - The intercept for the pooled model (option 1)
  - The intercept for the region-specific model (option 2)

# Hierarchical Models and Credibility Theory

---

- This makes precise the sense in which the random intercept model is a compromise between the pooled-data model (option 1) and the separate models for each region (option 2).

$$\hat{\alpha}_j = Z_j \cdot (\bar{y}_j - \beta \bar{t}_j) + (1 - Z_j) \cdot \hat{\mu}_\alpha \quad \text{where} \quad Z_j = \frac{n_j}{n_j + \sigma^2 / \sigma_\alpha^2}$$

- As  $\sigma_\alpha \rightarrow 0$ , the random intercept model  $\rightarrow$  option 1
- As  $\sigma_\alpha \rightarrow \infty$ , the random intercept model  $\rightarrow$  option 2
- Aside: what happens to the above formula if we remove the covariate  $t$  from our random intercept model?

# Bühlmann's Credibility and Random Intercepts

---

- If we remove the time covariate ( $t$ ) from the random intercepts model, we are left with a very familiar formula:

$$\hat{\alpha}_j = Z_j \cdot \bar{y}_j + (1 - Z_j) \cdot \hat{\mu}_\alpha \quad \text{where} \quad Z_j = \frac{n_j}{n_j + \frac{\sigma^2}{\sigma_\alpha^2}}$$

- **Therefore: Bühlmann's credibility model is a specific instance of hierarchical models.**
- The theory of hierarchical models gives one a practical way to integrate credibility theory into one's GLM modeling activities.

# Summing Up

---

- Hierarchical models are applicable when one's data comes grouped in one or more important ways.
- A group with a large number of levels might be regarded as a "massively categorical value" ...
  - Building separate models by level or including one dummy variable per level is often impractical or unwise from a credibility point of view.
- Hierarchical models offer a compromise between complete pooling and separate models per level.
- This compromise captures the essential idea of credibility theory.
- **Therefore hierarchical model enable a practical unification of two pillars of actuarial modeling:**
  - **Generalized Linear Models**
  - **Credibility theory**

## Other thoughts

---

- The “credibility weighting” reflected in the calculation of the random effects represents a “shrinkage” of group-level parameters ( $\alpha_j, \beta_j$ ) to their means ( $\mu_\alpha, \mu_\beta$ ).
- The lower the “between variance” ( $\sigma_\alpha^2$ ) the greater amount of “shrinkage” or “pooling” there is.
- There is more shrinkage for groups with fewer observations ( $n$ ).
- Panel data analysis is a type of hierarchical modeling → this is a natural framework for analyzing longitudinal datasets.
  - Multiple observations of the same policyholder
  - **Loss reserving: loss development is multiple observations of the same AY claims**
- **So... on to loss reserving.**



Hierarchical Growth Curve  
Loss Reserving Model

# Hierarchical Modeling for Loss Reserving

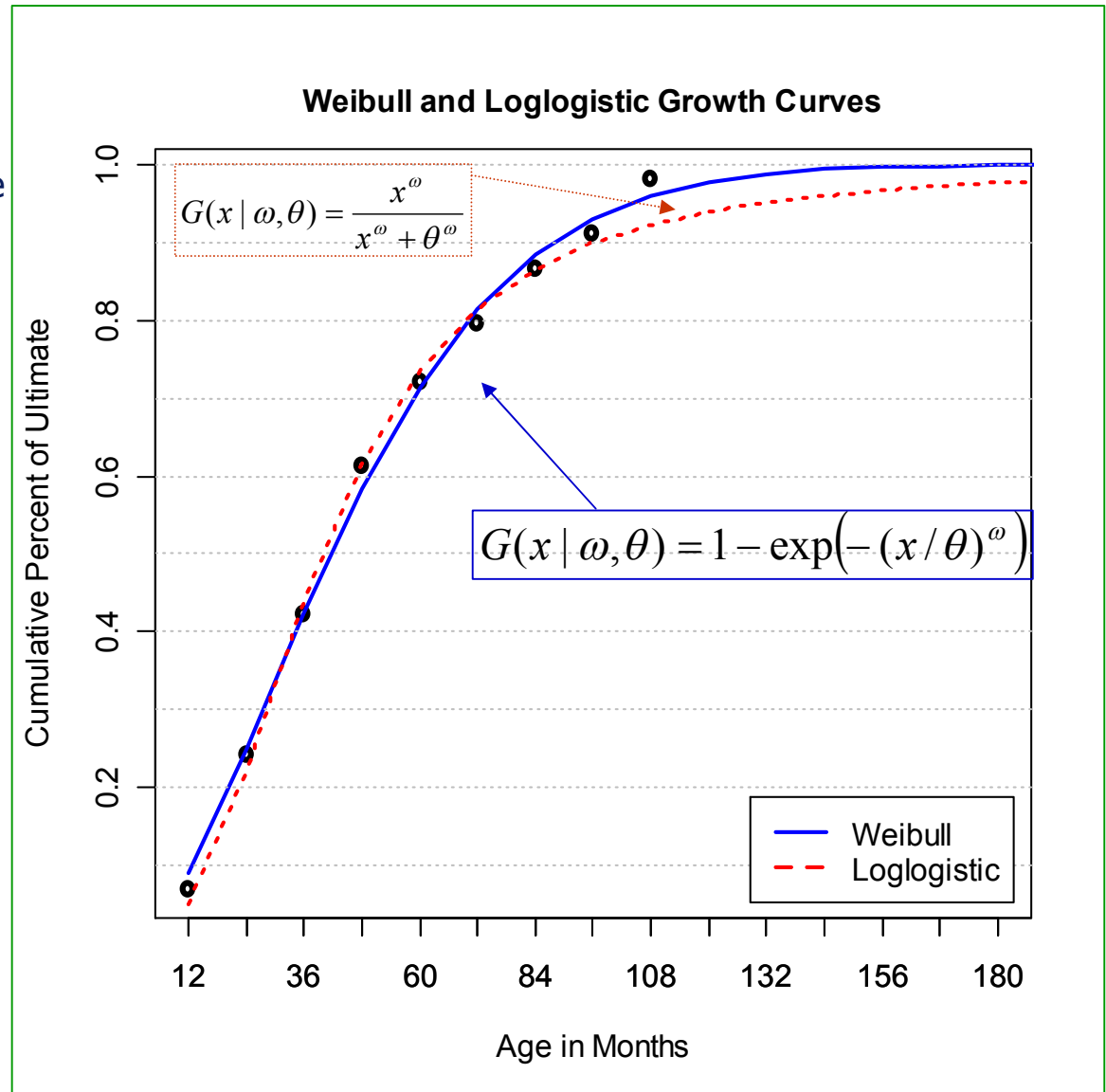
- Here is a garden-variety loss triangle (Dave Clark CAS *Forum* 2003):

Cumulative Losses in 1000's													
AY	12	24	36	48	60	72	84	96	108	120	reported	est ult	reserve
1991	358	1,125	1,735	2,183	2,746	3,320	3,466	3,606	3,834	3,901	3,901	3,901	0
1992	352	1,236	2,170	3,353	3,799	4,120	4,648	4,914	5,339		5,339	5,434	95
1993	291	1,292	2,219	3,235	3,986	4,133	4,629	4,909			4,909	5,379	470
1994	311	1,419	2,195	3,757	4,030	4,382	4,588				4,588	5,298	710
1995	443	1,136	2,128	2,898	3,403	3,873					3,873	4,858	985
1996	396	1,333	2,181	2,986	3,692						3,692	5,111	1,419
1997	441	1,288	2,420	3,483							3,483	5,672	2,189
1998	359	1,421	2,864								2,864	6,787	3,922
1999	377	1,363									1,363	5,644	4,281
2000	344										344	4,971	4,627
chain link	3.491	1.747	1.455	1.176	1.104	1.086	1.054	1.077	1.018	1.000	34,358	53,055	18,697
chain ldf	14.451	4.140	2.369	1.628	1.384	1.254	1.155	1.096	1.018	1.000			
growth curve	6.9%	24.2%	42.2%	61.4%	72.2%	79.7%	86.6%	91.3%	98.3%	100.0%			

- We can regard this as a longitudinal dataset.
- Grouping dimension: Accident Year (AY)
- We can build a parsimonious non-linear model that uses random effects to allow the model parameters to vary by accident year.**

# Growth Curves

- Let's build a **non-linear** model of the loss triangle.
  - GLM shows up a lot in the stochastic loss reserving literature.
  - But... are GLMs natural models for loss triangles?
- Uses growth curve to model the loss development process
  - 2-parameter curves
  - $\theta$  = scale
  - $\omega$  = shape
- Basic idea: we fit these curves to the LDFs and add random effects to  $\theta$  and/or  $\omega$  to allow the curves to vary by year.

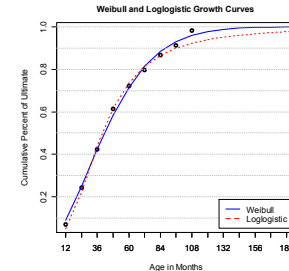


# Baseline Model: Heuristics

- Basic intuition is familiar:  $(\mathbf{CL}_{AY,t}) * (\mathbf{LDF}) = \mathbf{Ult loss}$

→  $CL_{AY,t} = (\text{Ult loss}_{AY}) * (1 / LDF_t)$

→  $CL_{AY,t} = (\text{Ult loss}_{AY}) * G_{\omega,\theta}(t) + \text{error}$



$$CumLoss_{AY,dev} = ULT_{AY} \left[ 1 - \exp\left(- (dev / \theta)^\omega\right) \right] + \varepsilon_{AY,dev}$$

$$ULT_{AY} \sim N\left(\mu_{ULT}, \sigma_{ULT}^2\right)$$

$$Var(\varepsilon_{AY,dev}) = \sigma^2 C\hat{L}_{AY,dev}$$

- The “growth curve” part comes in by using  $G(t)$  instead of LDFs.
  - Think of LDF’s as a rough piecewise linear approximation to a  $G(t)$
- The “hierarchical” part comes in because we can let  $ULT_{AY}$ ,  $\omega$ , and/or  $\theta$  vary by  $AY$  (using sub-models).

## Including Exposures in the Model

---

- Our model so far:

$$\begin{aligned}CumLoss_{AY,dev} &= ULT_{AY} \left[ 1 - \exp\left(- (dev / \theta)^\omega\right) \right] + \varepsilon_{AY,dev} \\ ULT_{AY} &\sim N\left(\mu_{ULT}, \sigma_{ULT}^2\right) \\ Var(\varepsilon_{AY,dev}) &= \sigma^2 C\hat{L}_{AY,dev}\end{aligned}$$

- **What if we wish to include an exposure measure in the model?**

- It's easily done:

$$\begin{aligned}CumLoss_{AY,dev} &= prem_{AY} * LR_{AY} \left[ 1 - \exp\left(- (dev / \theta)^\omega\right) \right] + \varepsilon_{AY,dev} \\ LR_{AY} &\sim N\left(\mu_{LR}, \sigma_{LR}^2\right) \\ Var(\varepsilon_{AY,dev}) &= \sigma^2 C\hat{L}_{AY,dev}\end{aligned}$$

- $prem_{AY}$  is given;  $LR_{AY}$  are hyperparameters;  $\mu_{LR}$  and  $\sigma_{LR}$  are parameters.

- $\mu_{LR}$  and  $\sigma_{LR}$  replace  $\mu_{ULT}$  and  $\sigma_{ULT}$ .
- $\mu_{LR}$  is essentially a "Cape Cod" style LR estimate for all years combined.
- $\{LR_{1991}, LR_{1992}, \dots, LR_{2000}, \}$  are "credibility weighted" LR estimates for each of the individual accident years.

## Other “Random Effects”

---

- Our model so far:

$$\begin{aligned}
 \text{CumLoss}_{AY,dev} &= ULT_{AY} \left[ 1 - \exp\left(- (dev / \theta)^\omega\right) \right] + \varepsilon_{AY,dev} \\
 ULT_{AY} &\sim N\left(\mu_{ULT}, \sigma_{ULT}^2\right) \\
 \text{Var}(\varepsilon_{AY,dev}) &= \sigma^2 C \hat{L}_{AY,dev}
 \end{aligned}$$

- **What if we want to include other random effects in the model?**

- It's easily done:

$$\begin{aligned}
 \text{CumLoss}_{AY,dev} &= ULT_{AY} \left[ 1 - \exp\left(- (dev / \theta)^\omega\right) \right] + \varepsilon_{AY,dev} \\
 \begin{pmatrix} ULT_{AY} \\ \omega_{AY} \end{pmatrix} &\sim N\left(\begin{pmatrix} \mu_{ULT} \\ \omega_{ULT} \end{pmatrix}, \Sigma\right), \quad \Sigma = \begin{pmatrix} \sigma_{ULT}^2 & \sigma_{ULT,\omega} \\ \sigma_{ULT,\omega} & \sigma_\omega^2 \end{pmatrix} \\
 \text{Var}(\varepsilon_{AY,dev}) &= \sigma^2 C \hat{L}_{AY,dev}
 \end{aligned}$$

- Here we add a “random warp” effect to let  $\omega$  vary by AY.
  - Can also add “random scale” ( $\theta$ ) effect if we want.
- We can compare AIC and diagnostic plots to judge whether this improves the model.

# Baseline Model Performance

Cumulative losses @ dev =  
**(Ult losses) \* (modeled growth)**

We must estimate the parameters:

$\{\mu_{ULT}; \omega; \theta; \sigma_{ULT}; \sigma\}$

$$CumLoss_{AY,dev} = ULT_{AY} \left[ 1 - \exp\left(-\left(\frac{dev}{\theta}\right)^\omega\right) \right] + \varepsilon_{AY,dev}$$

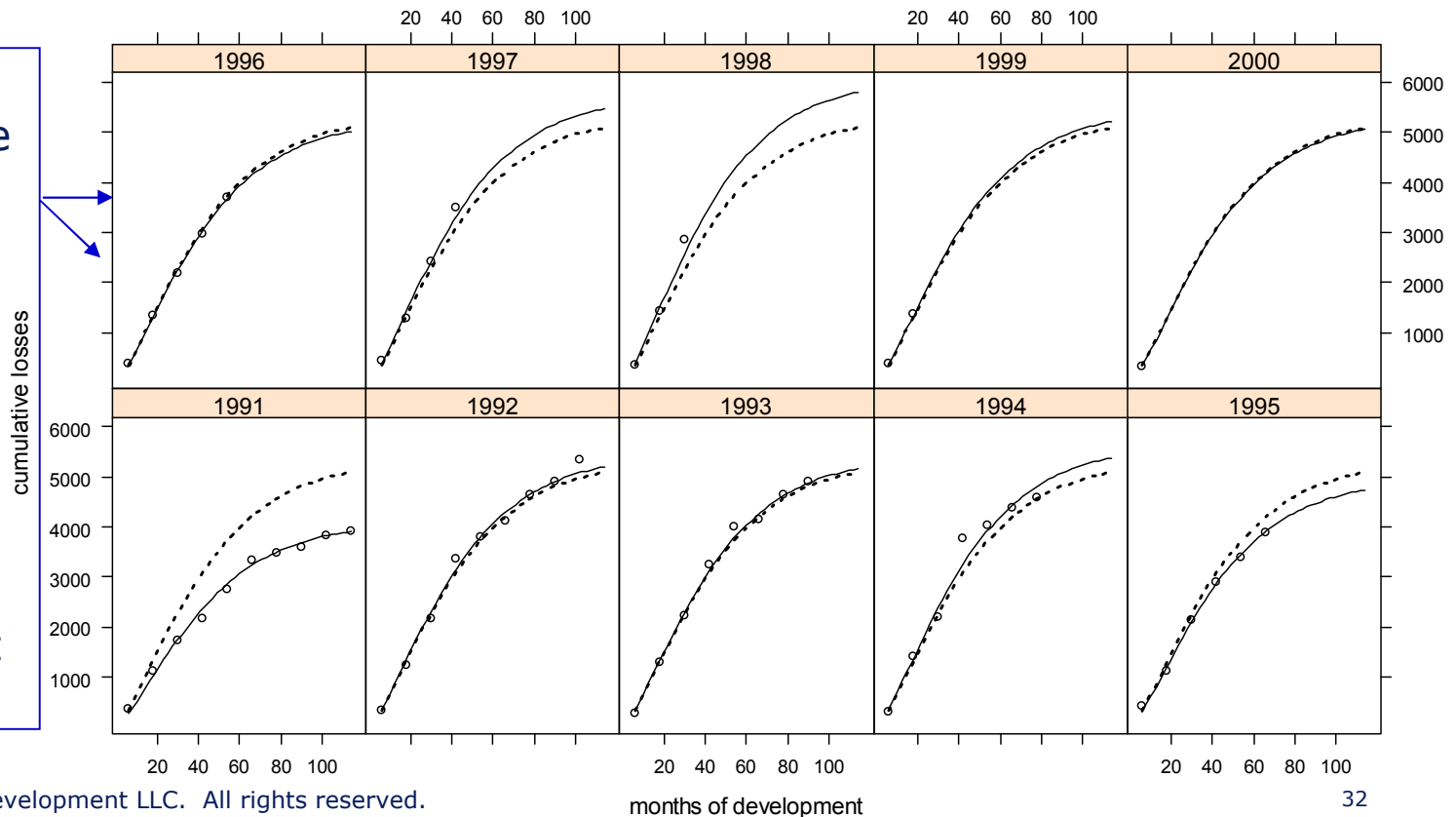
$$ULT_{AY} \sim N(\mu_{ULT}, \sigma_{ULT}^2)$$

$$Var(\varepsilon_{AY,dev}) = \sigma^2 C\hat{L}_{AY,dev}$$

Weibull Growth Curve Loss Development Model

— fixed — AY

- Random effects added to ultimate loss ( $ULT$ ) parameter.
  - Analogous to random intercepts
- Random shape ( $\omega$ ), scale ( $\theta$ ) effects were tested, found not to be significant.



# Baseline Model Performance

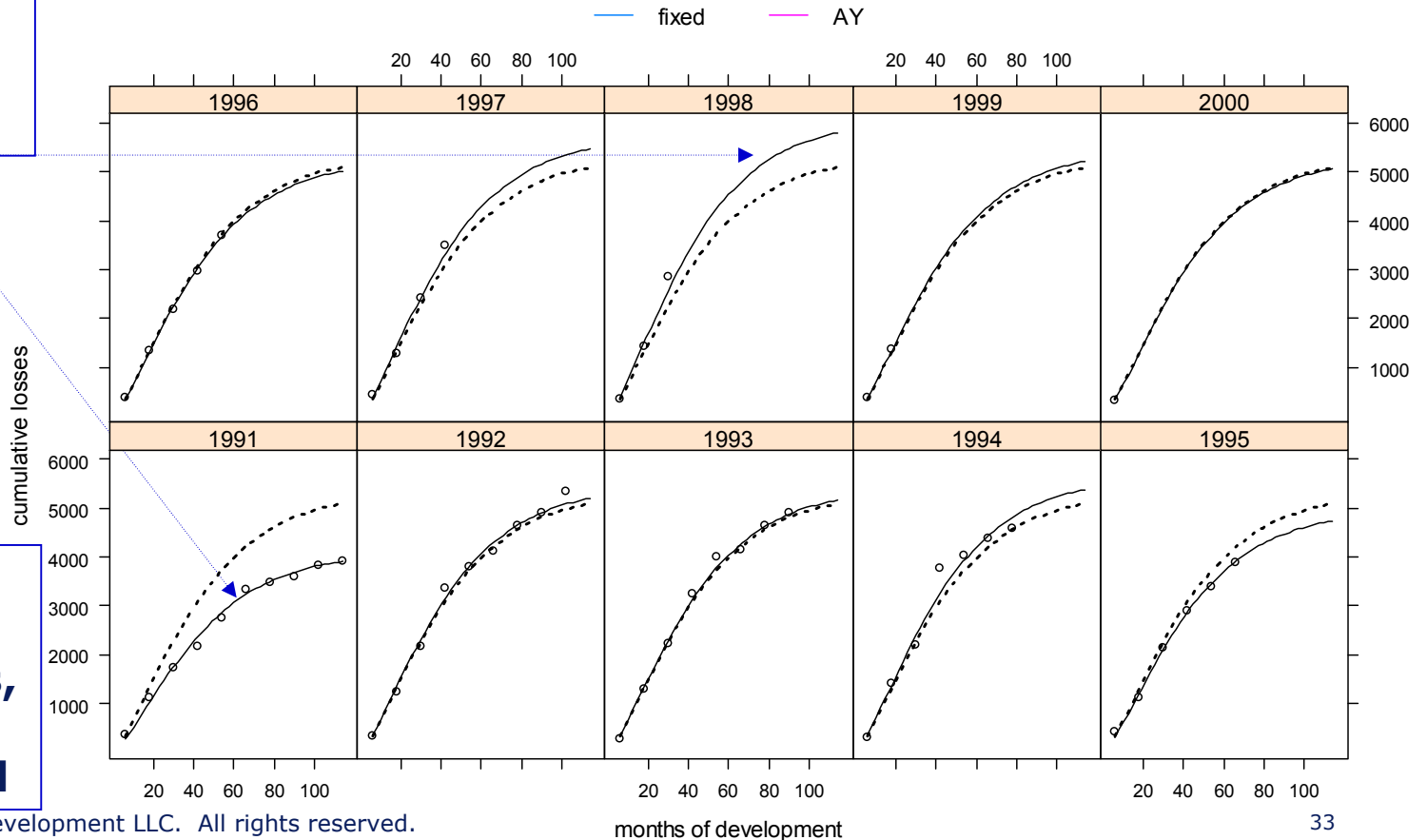
$$CumLoss_{AY,dev} = ULT_{AY} \left[ 1 - \exp\left(- (dev / \theta)^\omega\right) \right] + \varepsilon_{AY,dev}$$

$$ULT_{AY} \sim N(\mu_{ULT}, \sigma_{ULT}^2)$$

$$Var(\varepsilon_{AY,dev}) = \sigma^2 \hat{C}L_{AY,dev}$$

The random effects allow a "custom fit" growth curve for each AY while maintaining parsimony.

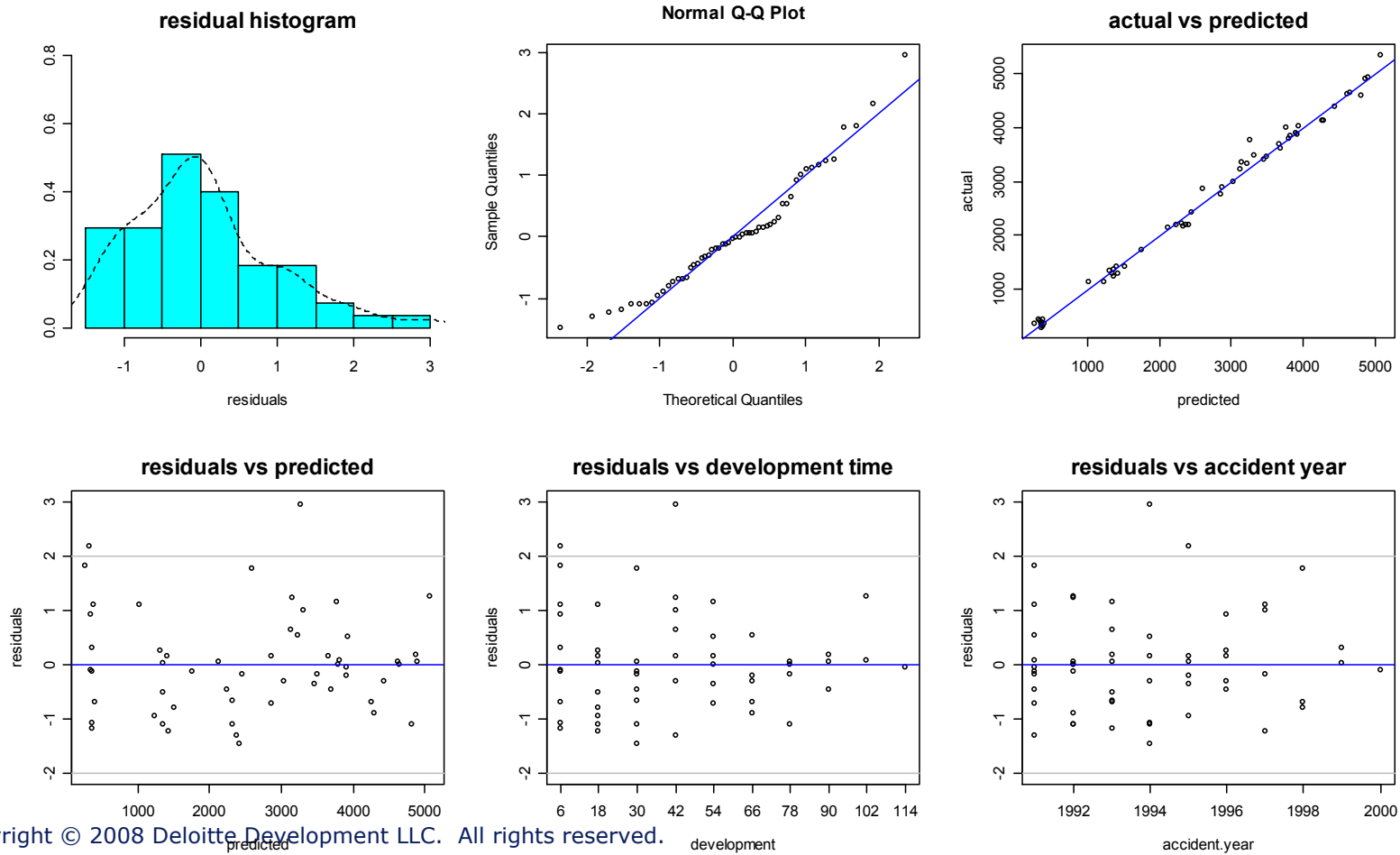
Weibull Growth Curve Loss Development Model



The model contains only 5 hyperparameters, but fits the loss triangle very well

# Residual Diagnostics

- An advantage of stochastic reserving in general – and this method in particular – is that it enables us to use residual diagnostic analysis.



# Model Results

- The overall o/s reserve estimate is close to that of the chain ladder \$18.7M.

CHAIN LADDER METHOD													
AY	12	24	36	48	60	72	84	96	108	120	reported	est ult	reserve
1991	358	1,125	1,735	2,183	2,746	3,320	3,466	3,606	3,834	3,901	3,901	3,901	0
1992	352	1,236	2,170	3,353	3,799	4,120	4,648	4,914	5,339		5,339	5,434	95
1993	291	1,292	2,219	3,235	3,986	4,133	4,629	4,909			4,909	5,379	470
1994	311	1,419	2,195	3,757	4,030	4,382	4,588				4,588	5,298	710
1995	443	1,136	2,128	2,898	3,403	3,873					3,873	4,858	985
1996	396	1,333	2,181	2,986	3,692						3,692	5,111	1,419
1997	441	1,288	2,420	3,483							3,483	5,672	2,189
1998	359	1,421	2,864								2,864	6,787	3,922
1999	377	1,363									1,363	5,644	4,281
2000	344										344	4,971	4,627
chain link	3.491	1.747	1.455	1.176	1.104	1.086	1.054	1.077	1.018	1.000	34,358	53,055	18,697
chain ldf	14.451	4.140	2.369	1.628	1.384	1.254	1.155	1.096	1.018	1.000			
growth curve	6.9%	24.2%	42.2%	61.4%	72.2%	79.7%	86.6%	91.3%	98.3%	100.0%			

ULT<sub>1998</sub> is lower in hierarchical model than chain ladder.

Cum losses @36 disproportionately high for 1998.

This data point has more leverage in the chain ladder method.

Parameters and Estimated Reserves - Baseline Model										
AY	dev	omega	theta	growth	reported	eval120	eval240	ULT	reserves	
1991	114	1.306	46.638	96.0%	3,901	3,943	4,073	4,074	172	
1992	102	1.306	46.638	93.8%	5,339	5,239	5,412	5,413	74	
1993	90	1.306	46.638	90.6%	4,909	5,207	5,379	5,380	470	
1994	78	1.306	46.638	85.9%	4,588	5,423	5,602	5,603	1,015	
1995	66	1.306	46.638	79.3%	3,873	4,777	4,935	4,936	1,062	
1996	54	1.306	46.638	70.2%	3,692	5,052	5,219	5,220	1,528	
1997	42	1.306	46.638	58.2%	3,483	5,512	5,694	5,695	2,212	
1998	30	1.306	46.638	43.0%	2,864	5,850	6,043	6,044	3,180	
1999	18	1.306	46.638	25.0%	1,363	5,255	5,429	5,430	4,067	
2000	6	1.306	46.638	6.6%	344	5,101	5,270	5,271	4,927	
total								53,066	18,708	

These are the 12 hierarchical model parameters.

$$\mu_{ULT} = 5306.6$$

# A Word About Software

---

- I used the open-source R statistical programming environment to fit these models.
  - High level, statistically advanced, widely used amongst academics and practitioners in most fields.
  - Becoming common in the actuarial community.
- Another CAS annual meeting presentation:

## **C-17: LOSS RESERVING WITH R**

**Tuesday, November 18, 10:00 a.m. – 11:30 a.m.**

R is a free, open-source (GPL-licensed) software environment that has become very popular in academic, scientific, and financial communities for statistical modeling and problem solving. CAS members may be familiar with the application of R to predictive modeling. This session will show how R can also be used for reserving. Markus Gesmann wrote the R ChainLadder package which carries out some of the basic deterministic and stochastic reserving methods familiar to casualty actuaries. Vincent Goulet wrote the R package actuar that provides additional R functionality in loss distribution modeling, credibility theory, and risk and ruin theory. Vincent will begin this session with a brief introduction to the R language and actuar. Dan Murphy will show how to use R with Excel via the add-in RExcel. Markus will then give a live demonstration of the capabilities of his ChainLadder package. The session will focus on R as a tool rather than on advanced actuarial techniques. Attendees can expect to leave the session somewhat more at ease with the notion that actuarial reserving methods and models need not be relegated to the realm of the spreadsheet.

**Moderator:**

Simon Lilley, Senior Actuarial Associate, SAFECO Insurance Companies

**Panelists:**

Markus Gesmann, Chief Analyst, Lloyd's of London  
Vincent Goulet, Associate Professor, Université Laval  
Daniel Murphy, Trinostics

# References

---

Clark, David R. (2003) "LDF Curve Fitting and Stochastic Loss Reserving: A Maximum Likelihood Approach," *CAS Forum*.

Frees, Edward (2006). Longitudinal and Panel Data Analysis and Applications in the Social Sciences. New York: Cambridge University Press.

Gelman, Andrew and Hill, Jennifer (2007). Data Analysis Using Regression and Multilevel / Hierarchical Models. New York: Cambridge University Press.

Guszcza, James. (2008). "Hierarchical Growth Curve Models for Loss Reserving," *CAS Forum*.

Pinheiro, Jose and Douglas Bates (2000). Mixed-Effects Models in S and S-Plus. New York: Springer-Verlag.